

Simplex Sprockets with induction hardened teeth bored with keyway and two setscrews (45 to 55 Rc)



Power Transmission Solutions

Due to an increasing demand for items with hardened teeth Cross+Morse is extending its range of simplex pilot bore sprockets to include items with special features such as bore with H7 tolerance, UNI keyways and set screws for locking.

The teeth on these items are Induction Harden to C45 and the keyway is located on the centre line of the tooth.

Why use Hardened-tooth sprockets?

As the chain contacts the sprocket, frictional wear of the tooth and sprocket occurs. With each rotation, every sprocket tooth contacts the chain. The hardness of the tooth directly relates to sprocket life. A sprocket with a “hardened tooth” may last three times longer than a softer sprocket.

Induction hardening only hardens the area near the applicator coil which means that sprockets and gears will have hard teeth and not hard bores.



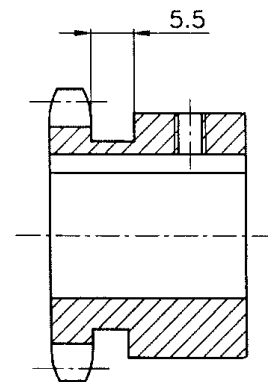
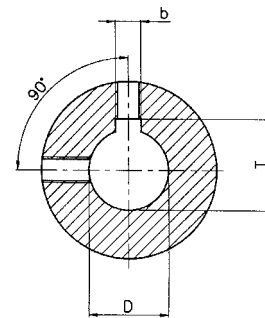
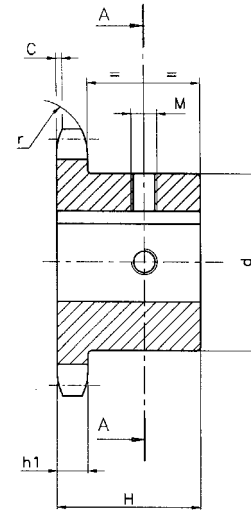


CHAIN	06B1
Pitch	9.525mm
Roller Dia	6.35mm
Internal Width	5.72mm
SPROCKETS	
Overall width	15.0mm
Tooth width h_1	5.3mm



3/8" x 7/32" – 06B1

Cat No.	Z	OD	D	H	d	Weight kgs	M
06B1-12 12	12	40.00	12	25.00	26.00	0.11	M3
06B1-12 15*	12	40.00	15	25.00	30.00	0.11	M4
06B1-12 16*	12	40.00	16	25.00	31.00	0.11	M4
06B1-13 14	13	43.00	14	25.00	29.00	0.13	M4
06B1-13 15	13	43.00	15	25.00	30.00	0.13	M4
06B1-13 16*	13	43.00	16	25.00	31.00	0.13	M4
06B1-13 18*	13	43.00	18	25.00	35.00	0.13	M5
06B1-14 15	14	46.30	15	25.00	31.00	0.16	M4
06B1-15 12	15	49.30	12	25.00	34.00	0.19	M3
06B1-15 14	15	49.30	14	25.00	34.00	0.19	M4
06B1-15 15	15	49.30	15	25.00	34.00	0.19	M4
06B1-15 20	15	49.30	20	25.00	36.00	0.19	M5
06B1-16 12	16	52.30	12	28.00	37.00	0.24	M3
06B1-16 16	16	52.30	16	28.00	37.00	0.24	M4
06B1-16 20	16	52.30	20	28.00	37.00	0.24	M5
06B1-16 25*	16	52.30	25	28.00	42.00	0.24	M6
06B1-17 12	17	55.30	12	28.00	40.00	0.29	M3
06B1-17 14	17	55.30	14	28.00	40.00	0.29	M4
06B1-17 20	17	55.30	20	28.00	40.00	0.29	M5
06B1-18 14	18	58.30	14	28.00	43.00	0.33	M4
06B1-18 15	18	58.30	15	28.00	43.00	0.33	M4
06B1-18 20	18	58.30	20	28.00	43.00	0.33	M5
06B1-18 25	18	58.30	25	28.00	43.00	0.33	M6
06B1-19 12	19	61.30	12	28.00	45.00	0.37	M3
06B1-19 15	19	61.30	15	28.00	45.00	0.37	M4
06B1-19 16	19	61.30	16	28.00	45.00	0.37	M4
06B1-19 18	19	61.30	18	28.00	45.00	0.37	M5
06B1-19 19	19	61.30	19	28.00	45.00	0.37	M5
06B1-19 20	19	61.30	20	28.00	45.00	0.37	M5
06B1-19 25	19	61.30	25	28.00	45.00	0.37	M6
06B1-20 15	20	64.30	15	28.00	46.00	0.40	M4
06B1-20 16	20	64.30	16	28.00	46.00	0.40	M4
06B1-20 20	20	64.30	20	28.00	46.00	0.40	M5
06B1-20 25	20	64.30	25	28.00	46.00	0.40	M6
06B1-21 20	21	68.00	20	28.00	48.00	0.42	M5
06B1-22 20	22	71.00	20	28.00	50.00	0.47	M5
06B1-23 15	23	73.50	15	28.00	52.00	0.52	M4
06B1-23 20	23	73.50	20	28.00	52.00	0.52	M5
06B1-24 19	24	77.00	19	28.00	54.00	0.55	M5
06B1-24 24	24	77.00	24	28.00	54.00	0.55	M6
06B1-25 20	25	80.00	20	28.00	57.00	0.61	M5
06B1-30 20	30	94.70	20	28.00	60.00	0.78	M5
06B1-30 30	30	94.70	30	28.00	60.00	0.78	M6



Items marked *

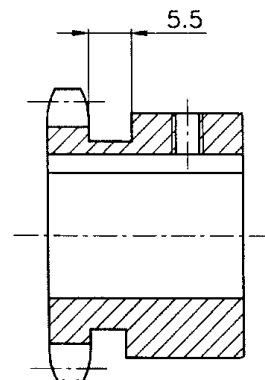
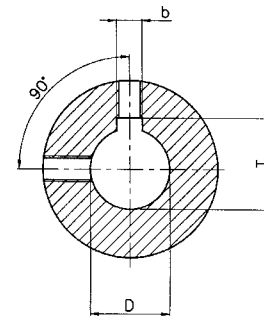
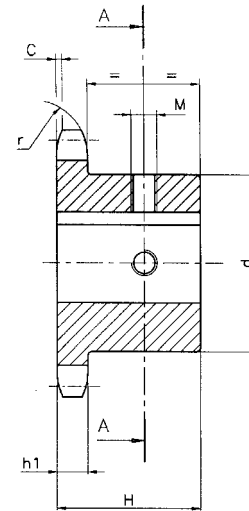


CHAIN	08B1
Pitch	12.70mm
Roller Dia	8.50mm
Internal Width	7.80mm
SPROCKETS	
Overall width	18.30mm
Tooth width h_1	7.20mm



1/2" x 5/16" – 08B1

Cat No.	Z	OD	D	H	d	Weight kgs	M
08B1-11 15	11	48.70	15	25.00	30.00	0.15	M4
08B1-12 15	12	53.00	15	28.00	33.00	0.22	M4
08B1-12 16	12	53.00	16	28.00	33.00	0.22	M4
08B1-12 18	12	53.00	18	28.00	33.00	0.22	M5
08B1-12 19	12	53.00	19	28.00	35.00	0.22	M5
08B1-12 20	12	53.00	20	28.00	36.00	0.22	M5
08B1-12 25*	12	53.00	25	28.00	42.00	0.22	M6
08B1-13 12	13	57.40	12	28.00	37.00	0.26	M3
08B1-13 14	13	57.40	14	28.00	37.00	0.26	M4
08B1-13 16	13	57.40	16	28.00	37.00	0.26	M4
08B1-13 18	13	57.40	18	28.00	37.00	0.26	M5
08B1-13 20	13	57.40	20	28.00	37.00	0.26	M5
08B1-13 25*	13	57.40	25	28.00	42.00	0.26	M6
08B1-14 16	14	61.80	16	28.00	41.00	0.31	M4
08B1-14 19	14	61.80	19	28.00	41.00	0.31	M5
08B1-14 20	14	61.80	20	28.00	41.00	0.31	M5
08B1-14 25	14	61.80	25	28.00	41.00	0.31	M6
08B1-15 16	15	65.50	16	28.00	45.00	0.39	M4
08B1-15 20	15	65.50	20	28.00	45.00	0.39	M5
08B1-15 25	15	65.50	25	28.00	45.00	0.39	M6
08B1-15 28	15	65.50	28	28.00	45.00	0.39	M6
08B1-15 30	15	65.50	30	28.00	47.00	0.39	M6
08B1-16 19	16	69.50	19	28.00	50.00	0.47	M5
08B1-16 20	16	69.50	20	28.00	50.00	0.47	M5
08B1-16 25	16	69.50	25	28.00	50.00	0.47	M6
08B1-16 30	16	69.50	30	28.00	50.00	0.47	M6
08B1-17 19	17	73.60	19	28.00	52.00	0.51	M5
08B1-17 20	17	73.60	20	28.00	52.00	0.51	M5
08B1-17 25	17	73.60	25	28.00	52.00	0.51	M6
08B1-17 28	17	73.60	28	28.00	52.00	0.51	M6
08B1-17 30	17	73.60	30	28.00	52.00	0.51	M6
08B1-18 16	18	77.80	16	28.00	56.00	0.59	M4
08B1-18 18	18	77.80	18	28.00	56.00	0.59	M5
08B1-18 20	18	77.80	20	28.00	56.00	0.59	M5
08B1-18 25	18	77.80	25	28.00	56.00	0.59	M6
08B1-18 28	18	77.80	28	28.00	56.00	0.59	M6
08B1-18 30	18	77.80	30	28.00	56.00	0.59	M6
08B1-19 16	19	81.70	16	28.00	60.00	0.68	M4
08B1-19 19	19	81.70	19	28.00	60.00	0.68	M5
08B1-19 20	19	81.70	20	28.00	60.00	0.68	M5
08B1-19 25	19	81.70	25	28.00	60.00	0.68	M6
08B1-19 30	19	81.70	30	28.00	60.00	0.68	M6
08B1-20 20	20	85.80	20	28.00	64.00	0.78	M5
08B1-20 25	20	85.80	25	28.00	64.00	0.78	M6
08B1-20 28	20	85.80	28	28.00	64.00	0.78	M6
08B1-20 30	20	85.80	30	28.00	64.00	0.78	M6



Items marked *

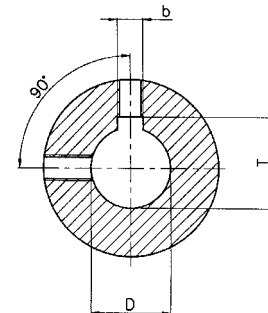
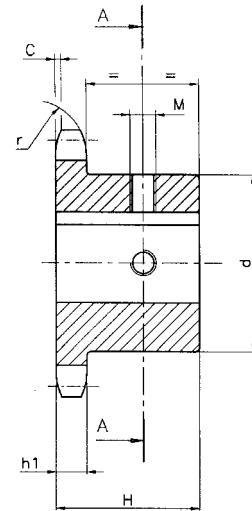


CHAIN	08B1
Pitch	12.70mm
Roller Dia	8.50mm
Internal Width	7.80mm
SPROCKETS	
Overall width	18.30mm
Tooth width h_1	7.20mm



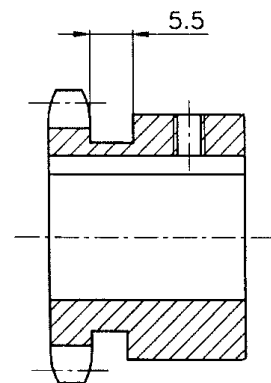
1/2" x 5/16" – 08B1 cont'd

Cat No.	Z	OD	D	H	d	Weight kgs	M
08B1-21 20	21	89.70	20	28.00	68.00	0.84	M5
08B1-21 25	21	89.70	25	28.00	68.00	0.84	M6
08B1-21 30	21	89.70	30	28.00	68.00	0.84	M6
08B1-22 20	22	93.80	20	28.00	70.00	0.91	M5
08B1-22 24	22	93.80	24	28.00	70.00	0.91	M6
08B1-22 25	22	93.80	25	28.00	70.00	0.91	M6
08B1-22 30	22	93.80	30	28.00	70.00	0.91	M6
08B1-23 20	23	98.20	20	28.00	70.00	0.94	M5
08B1-23 25	23	98.20	25	28.00	70.00	0.94	M6
08B1-23 28	23	98.20	28	28.00	70.00	0.94	M6
08B1-23 30	23	98.20	30	28.00	70.00	0.94	M6
08B1-24 25	24	101.80	25	28.00	70.00	1.00	M6
08B1-24 28	24	101.80	28	28.00	70.00	1.00	M6
08B1-24 30	24	101.80	30	28.00	70.00	1.00	M6
08B1-25 24	25	105.80	24	28.00	70.00	1.00	M6
08B1-25 25	25	105.80	25	28.00	70.00	1.00	M6
08B1-25 28	25	105.80	28	28.00	70.00	1.00	M6
08B1-25 30	25	105.80	30	28.00	70.00	1.00	M6
08B1-30 25	30	126.10	25	28.00	80.00	1.50	M6
08B1-30 30	30	126.10	30	30.00	80.00	1.50	M6
08B1-30 35	30	126.10	35	30.00	80.00	1.50	M8



5/8" x 3/8" – 10B1

Cat No.	Z	OD	D	H	d	Weight kgs	M
10B1-10 16	10	57.50	16	25.00	35.00	0.22	M4
10B1-11 20	11	63.00	20	30.00	37.00	0.29	M5
10B1-11 25*	11	63.00	25	30.00	42.00	0.29	M6
10B1-12 25	12	68.00	25	30.00	44.00	0.38	M6
10B1-13 25	13	73.00	25	30.00	47.00	0.47	M6
10B1-13 30	13	73.00	30	30.00	49.00	0.47	M6
10B1-14 20	14	78.00	20	30.00	52.00	0.60	M5
10B1-14 25	14	78.00	25	30.00	52.00	0.60	M6
10B1-14 30	14	78.00	30	30.00	52.00	0.60	M6
10B1-15 20	15	83.00	20	30.00	57.00	0.69	M5
10B1-15 25	15	83.00	25	30.00	57.00	0.69	M6
10B1-15 30	15	83.00	30	30.00	57.00	0.69	M6
10B1-16 25	16	88.00	25	30.00	60.00	0.80	M6
10B1-16 28	16	88.00	28	30.00	60.00	0.80	M6
10B1-16 30	16	88.00	30	30.00	60.00	0.80	M6



Items marked *



<u>CHAIN</u>	<u>16B1</u>
Pitch	25.40mm
Roller Dia	15.88mm
Internal Width	17.02mm
<u>SPROCKETS</u>	
Overall width	38.70mm
Tooth width h_1	16.20mm



1" x 17.02" – 16B1 cont'd

Cat No.	Z	OD	⌀	H	d	Weight kgs	M
16B1-19 40	19	165.20	40	45.00	100.00	3.84	M10
16B1-19 50	19	165.20	50	45.00	100.00	3.84	M12
16B1-20 30	20	173.00	30	45.00	100.00	3.97	M6
16B1-20 35	20	173.00	35	45.00	100.00	3.97	M8
16B1-20 38	20	173.00	38	45.00	100.00	3.97	M8
16B1-20 40	20	173.00	40	45.00	100.00	3.97	M10
16B1-20 50	20	173.00	50	45.00	100.00	3.97	M12
16B1-21 25	21	181.20	25	50.00	110.00	5.06	M6
16B1-21 30	21	181.20	30	50.00	110.00	5.06	M6
16B1-21 32	21	181.20	32	50.00	110.00	5.06	M8
16B1-21 40	21	181.20	40	50.00	110.00	5.06	M10
16B1-21 48	21	181.20	48	50.00	110.00	5.06	M12
16B1-21 50	21	181.20	50	50.00	110.00	5.06	M12
16B1-22 30	22	189.30	30	50.00	110.00	5.14	M6
16B1-22 38	22	189.30	38	50.00	110.00	5.14	M8
16B1-22 40	22	189.30	40	50.00	110.00	5.14	M10
16B1-22 45	22	189.30	45	50.00	110.00	5.14	M12
16B1-22 50	22	189.30	50	50.00	110.00	5.14	M12
16B1-23 40	23	197.50	40	50.00	110.00	5.62	M10
16B1-23 50	23	197.50	50	50.00	110.00	5.62	M12
16B1-24 25	24	205.50	25	50.00	110.00	5.90	M6
16B1-24 50	24	205.50	50	50.00	110.00	5.90	M12
16B1-25 30	25	213.50	30	50.00	110.00	6.18	M6
16B1-25 35	25	213.50	35	50.00	110.00	6.18	M8
16B1-25 40	25	213.50	40	50.00	110.00	6.18	M10
16B1-25 45	25	213.50	45	50.00	110.00	6.18	M12
16B1-25 50	25	213.50	50	50.00	110.00	6.18	M12

