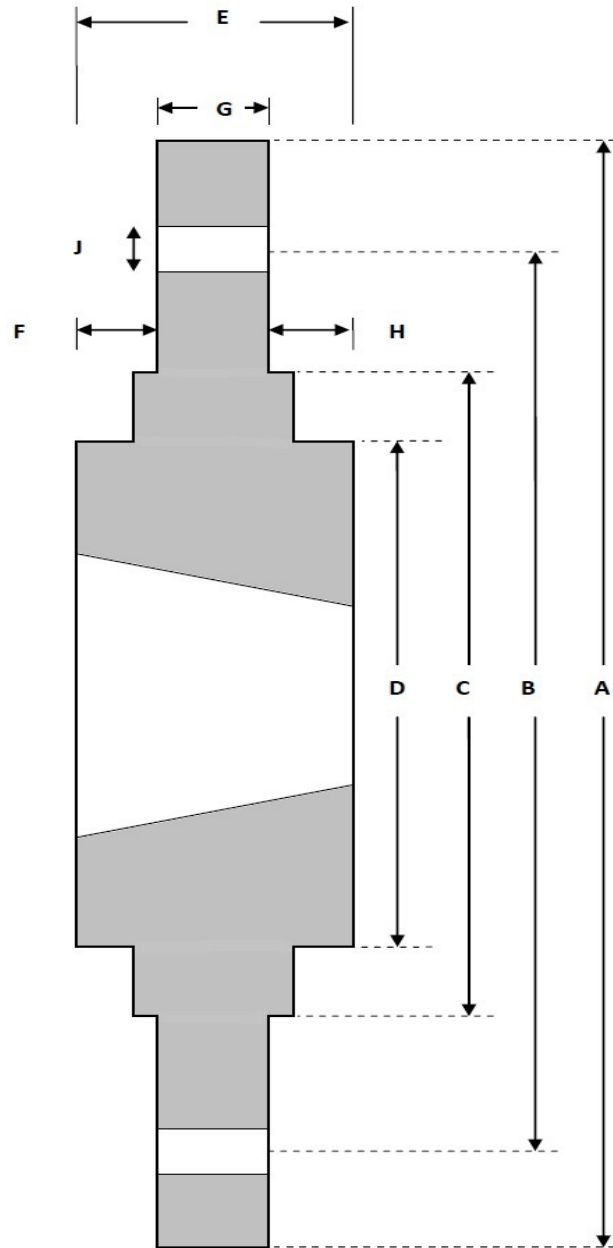


## BOLT ON TAPER BORE HUBS

Cross+Morse Taper Bore Bolt on hubs are available to suit five different taper bushes. They are made of high grade cast iron and are phosphated.

They provide a convenient and secure method for attaching fan rotors, impellers and other components to a shaft.

A full range of taper bore bushes are available to suit in both metric and imperial sizes.



All dimensions in mm

Part No	Bush	A $\varnothing$	B $\varnothing$	C $\varnothing$	D $\varnothing$	E	F	G	H	J (No of bores)
BF12	1210	120	100	80	70	25	9	7.5	2.5	6 x 7.5
BF16	1610	130	110	90	80	25	9	7.5	2.5	6 x 7.5
BF20	2012	145	125	115	95	32	12	9.5	2.5	6 x 9.5
BF25	2517	185	155	130	115	45	19	12.5	2.5	6 x 11.5
BF30	3020	220	190	165	145	51	19	12.5	2.5	6 x 13.5