

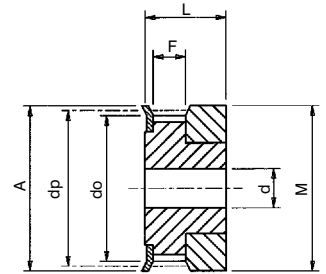
Pulleys for Metric Polyurethane T2.5 and T5 Belts



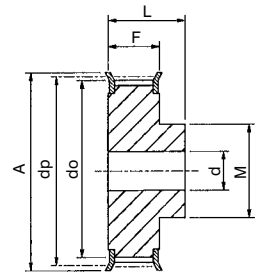
Catalogue No.	No. Teeth Z	Pulley Type	Pitch Circle Diameter dp	Min. Bore d	Max Bore d	Outside Diameter do	Flange Diameter A	Pulley Width F	Bore Length L	Hub Diameter M	Approx. Weight kg
2.5mm Pitch Pulleys for 6mm Wide Belt Ref. 6T2.5-											
6 T2.5-12	12	0F	9.55	4	4.5	9.0	13.0	9	16	13	.003
6 T2.5-14	14	0F	11.14	4	6	10.6	15.0	9	16	15	.004
6 T2.5-15	15	0F	11.94	4	6	11.4	15.0	9	16	15	.005
6 T2.5-16	16	0F	12.73	4	7	12.2	16.0	9	16	16	.005
6 T2.5-18	18	1F	14.32	4	6.5	13.8	17.5	10	16	10	.006
6 T2.5-19	19	1F	15.12	4	6.5	14.6	18.0	10	16	10	.007
6 T2.5-20	20	1F	15.92	4	7	15.4	20.0	10	16	11	.008
6 T2.5-22	22	1F	17.51	4	7	17.0	23.0	10	16	11	.010
6 T2.5-24	24	1F	19.10	4	8	18.5	23.0	10	16	12	.012
6 T2.5-25	25	1F	19.89	4	8.5	19.3	23.0	10	16	13	.013
6 T2.5-26	26	1F	20.69	4	9	20.1	25.0	10	16	14	.014
6 T2.5-28	28	1F	22.28	4	9	21.7	25.0	10	16	14	.016
6 T2.5-30	30	1F	23.87	6	10	23.3	28.0	10	16	16	.018
6 T2.5-32	32	1F	25.46	6	10	24.9	32.0	10	16	16	.020
6 T2.5-36	36	1F	28.65	6	13	28.1	36.0	10	16	20	.026
6 T2.5-40	40	1F	31.83	6	14	31.3	38.0	10	16	22	.032
6 T2.5-44	44	1F	35.01	6	15	34.5	42.0	10	16	24	.040
6 T2.5-48	48	1	38.20	6	17	37.7	-	10	16	26	.048
6 T2.5-60	60	1	47.75	8	22	47.2	-	10	16	34	.073
5mm Pitch Pulleys for 10mm Wide Belt Ref. 10T5-											
10 T5-10	10	1F	15.92	4	5	15.0	19.5	15	21	8	.012
10 T5-12	12	1F	19.10	4	7	18.2	23.0	15	21	11	.016
10 T5-14	14	1F	22.28	4	8	21.4	25.0	15	21	13	.019
10 T5-15	15	1F	23.87	6	10	23.0	28.0	15	21	16	.021
10 T5-16	16	1F	25.46	6	11	24.6	32.0	15	21	18	.025
10 T5-18	18	1F	28.65	6	13	27.8	32.0	15	21	20	.031
10 T5-19	19	1F	30.24	6	14	29.4	36.0	15	21	22	.036
10 T5-20	20	1F	31.83	6	15	31.0	36.0	15	21	23	.038
10 T5-22	22	1F	35.01	6	15	34.1	38.0	15	21	24	.046
10 T5-24	24	1F	38.20	6	17	37.4	42.0	15	21	26	.054
10 T5-25	25	1F	39.79	6	17	38.9	44.0	15	21	26	.058
10 T5-26	26	1F	41.38	6	17	40.6	44.0	15	21	26	.062
10 T5-27	27	1F	42.97	8	19	42.2	48.0	15	21	30	.064
10 T5-28	28	1F	44.56	8	20	43.7	48.0	15	21	32	.071
10 T5-30	30	1F	47.75	8	22	46.9	51.0	15	21	34	.075
10 T5-32	32	1F	50.93	8	24	50.1	54.0	15	21	38	.088
10 T5-36	36	1F	57.30	8	24	56.4	64.0	15	21	38	.114
10 T5-40	40	1F	63.66	8	26	62.8	66.5	15	21	40	.138
10 T5-42	42	1F	66.84	8	26	66.0	70.0	15	21	40	.153
10 T5-44	44	1	70.03	8	29	69.2	-	15	21	45	.170
10 T5-48	48	1	76.39	8	32	75.5	-	15	21	50	.200
10 T5-60	60	1	95.49	8	42	94.6	-	15	21	65	.308
5mm Pitch Pulleys for 16mm Wide Belt Ref. 16T5-											
16 T5-10	10	1F	15.92	4	5	15.0	19.5	21	27	8	.016
16 T5-12	12	1F	19.10	4	7	18.2	23.0	21	27	11	.022
16 T5-14	14	1F	22.28	4	8	21.4	25.0	21	27	13	.027
16 T5-15	15	1F	23.87	6	10	23.0	28.0	21	27	16	.030
16 T5-16	16	1F	25.46	6	11	24.6	32.0	21	27	18	.036
16 T5-18	18	1F	28.65	6	13	27.8	32.0	21	27	20	.044
16 T5-19	19	1F	30.24	6	14	29.4	36.0	21	27	22	.050
16 T5-20	20	1F	31.83	6	15	31.0	36.0	21	27	23	.054
16 T5-22	22	1F	35.01	6	15	34.1	38.0	21	27	24	.055
16 T5-24	24	1F	38.20	6	17	37.4	42.0	21	27	26	.077
16 T5-25	25	1F	39.79	6	17	38.9	44.0	21	27	26	.082
16 T5-26	26	1F	41.38	6	17	40.6	44.0	21	27	26	.086
16 T5-27	27	1F	42.97	8	19	42.2	48.0	21	27	30	.092
16 T5-28	28	1F	44.56	8	20	43.7	48.0	21	27	32	.094
16 T5-30	30	1F	47.75	8	22	46.9	51.0	21	27	34	.106
16 T5-32	32	1F	50.93	8	24	50.1	54.0	21	27	38	.124
16 T5-36	36	1F	57.30	8	24	56.4	64.0	21	27	38	.160
16 T5-40	40	1F	63.66	8	26	62.8	66.5	21	27	40	.195
16 T5-42	42	1F	66.84	8	26	66.0	70.0	21	27	40	.206
16 T5-44	44	1	70.03	8	29	69.2	-	21	27	45	.230
16 T5-48	48	1	76.39	8	32	75.5	-	21	27	50	.282
16 T5-60	60	1	95.49	8	42	94.6	-	21	27	65	.432
5mm Pitch Pulleys for 25mm Wide Belt Ref. 25T5-											
25 T5-10	10	1F	15.92	4	5	15.0	19.5	30	36	8	.025
25 T5-12	12	1F	19.10	4	7	18.2	23.0	30	36	11	.032
25 T5-14	14	1F	22.28	4	8	21.4	25.0	30	36	13	.038
25 T5-15	15	1F	23.87	6	10	23.0	28.0	30	36	16	.042
25 T5-16	16	1F	25.46	6	11	24.6	32.0	30	36	18	.052
25 T5-18	18	1F	28.65	6	13	27.8	32.0	30	36	20	.063
25 T5-19	19	1F	30.24	6	14	29.4	36.0	30	36	22	.072
25 T5-20	20	1F	31.83	6	15	31.0	36.0	30	36	23	.078
25 T5-22	22	1F	35.01	6	15	34.1	38.0	30	36	24	.082
25 T5-24	24	1F	38.20	8	17	37.4	42.0	30	36	26	.110
25 T5-25	25	1F	39.79	8	17	38.9	44.0	30	36	26	.117
25 T5-26	26	1F	41.38	8	17	40.6	44.0	30	36	26	.121
25 T5-27	27	1F	42.97	8	19	42.2	48.0	30	36	30	.123
25 T5-28	28	1F	44.56	8	20	43.7	48.0	30	36	32	.127
25 T5-30	30	1F	47.75	8	22	46.9	51.0	30	36	34	.152
25 T5-32	32	1F	50.93	8	24	50.1	54.0	30	36	38	.177
25 T5-36	36	1F	57.30	8	24	56.4	64.0	30	36	38	.232
25 T5-40	40	1F	63.66	8	26	62.8	66.5	30	36	40	.278
25 T5-42	42	1F	66.84	8	26	66.0	70.0	30	36	40	.296
25 T5-44	44	1	70.03	8	29	69.2	-	30	36	45	.327
25 T5-48	48	1	76.39	8	32	75.5	-	30	36	50	.402
25 T5-60	60	1	95.49	8	42	94.6	-	30	36	65	.617

Pulley Types

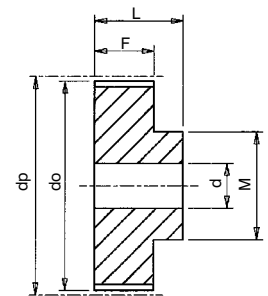
The Pulley types referred to in tables are as drawings below. Suffix 'F' indicates pulley has flanges. Std. Pulleys can be reworked to customers bore and keywaying requirement.



Type 0F



Type 1F



Type 1

All pulleys machined from aluminium for low weight and inertia, and fitted as indicated with steel flanges. All dimensions in mm

Tel +44 121 360 0155

Fax +44 121 325 1079

Email sales@crossmorse.com

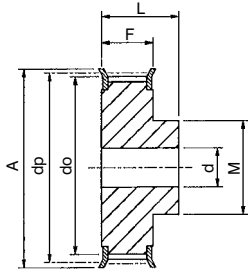
Pulleys for Metric Polyurethane T10 Belts



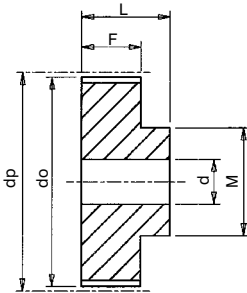
Pulley Types

The Pulley types referred to in tables are as drawings below. Suffix 'F' indicates pulley has flanges.

Std. Pulleys can be reworked to customers bore and keywaying requirements.



Type 1F



Type 1

All pulleys machined from aluminium for low weight and inertia, and fitted as indicated with steel flanges.
All dimensions in mm

Catalogue No.	No. Teeth Z	Pulley Type	Pitch Circle Dia. dp	Min. Bore d	Max. Bore d	Outside Diameter do	Flange Dia. A	Pulley Width F	Bore Length L	Hub Dia. M	Approx. Weight kg
10mm Pitch Pulleys for 16mm Wide Belt Ref. 16T10											
16 T10-12	12	1F	38.20	6	18	36.3	42	21	31	28	0.08
16 T10-14	14	1F	44.56	8	21	42.7	48	21	31	32	0.11
16 T10-15	15	1F	47.75	8	21	45.9	51	21	31	32	0.12
16 T10-16	16	1F	50.93	8	23	49.1	54	21	31	35	0.14
16 T10-18	18	1F	57.30	8	26	55.4	60	21	31	40	0.17
16 T10-19	19	1F	60.48	8	28	58.6	66	21	31	44	0.19
16 T10-20	20	1F	63.66	8	30	61.8	66	21	31	46	0.21
16 T10-22	22	1F	70.03	8	34	68.2	75	21	31	52	0.26
16 T10-24	24	1F	76.39	8	38	74.5	83	21	31	58	0.29
16 T10-25	25	1F	79.58	8	39	77.7	83	21	31	60	0.31
16 T10-26	26	1F	82.76	8	39	80.9	87	21	31	60	0.36
16 T10-27	27	1F	85.94	8	39	84.1	91	21	31	60	0.37
16 T10-28	28	1F	89.13	8	39	87.2	93	21	31	60	0.40
16 T10-30	30	1F	95.49	8	39	93.6	97	21	31	60	0.44
16 T10-32	32	1F	101.86	10	42	100.0	106	21	31	65	0.49
16 T10-36	36	1F	114.59	10	45	112.7	120	21	31	70	0.63
16 T10-40	40	1F	127.32	10	52	125.4	131	21	31	80	0.77
16 T10-44	44	1	140.06	10	57	138.2	-	21	31	88	1.00
16 T10-48	48	1	152.79	16	62	150.9	-	21	31	95	1.09
16 T10-60	60	1	190.99	16	72	189.1	-	21	31	110	1.70
10mm Pitch Pulleys for 25mm Wide Belt Ref. 25T10											
25 T10-12	12	1F	38.20	6	18	36.3	42	30	40	28	0.10
25 T10-14	14	1F	44.56	8	21	42.7	48	30	40	32	0.14
25 T10-15	15	1F	47.75	8	21	45.9	51	30	40	32	0.16
25 T10-16	16	1F	50.93	8	23	49.1	54	30	40	35	0.18
25 T10-18	18	1F	57.30	8	26	55.4	60	30	40	40	0.23
25 T10-19	19	1F	60.48	8	28	58.6	66	30	40	44	0.25
25 T10-20	20	1F	63.66	8	30	61.8	66	30	40	46	0.28
25 T10-22	22	1F	70.03	8	34	68.2	75	30	40	52	0.34
25 T10-24	24	1F	76.39	8	38	74.5	83	30	40	58	0.39
25 T10-25	25	1F	79.58	8	39	77.7	83	30	40	60	0.42
25 T10-26	26	1F	82.76	8	39	80.9	87	30	40	60	0.48
25 T10-27	27	1F	85.94	8	39	84.1	91	30	40	60	0.54
25 T10-28	28	1F	89.13	8	39	87.2	93	30	40	60	0.55
25 T10-30	30	1F	95.49	8	39	93.6	97	30	40	60	0.64
25 T10-32	32	1F	101.86	10	42	100.0	106	30	40	65	0.69
25 T10-36	36	1F	114.59	10	45	112.7	120	30	40	70	0.87
25 T10-40	40	1F	127.32	10	52	125.4	131	30	40	80	1.07
25 T10-44	44	1	140.06	10	57	138.2	-	30	40	88	1.35
25 T10-48	48	1	152.79	16	62	150.9	-	30	40	95	1.52
25 T10-60	60	1	190.99	16	72	189.1	-	30	40	110	2.34
10mm Pitch Pulleys for 32mm Wide Belt Ref. 32T10-											
32 T10-18	18	1F	57.30	10	26	55.4	60	37	47	40	0.26
32 T10-19	19	1F	60.48	10	28	58.6	66	37	47	44	0.28
32 T10-20	20	1F	63.66	12	30	61.8	66	37	47	46	0.32
32 T10-22	22	1F	70.03	12	34	68.2	75	37	47	52	0.40
32 T10-24	24	1F	76.39	12	38	74.5	83	37	47	58	0.48
32 T10-25	25	1F	79.58	12	39	77.7	83	37	47	60	0.53
32 T10-26	26	1F	82.76	12	39	80.9	87	37	47	60	0.57
32 T10-27	27	1F	85.94	12	39	84.1	91	37	47	60	0.60
32 T10-28	28	1F	89.13	12	39	87.2	93	37	47	60	0.64
32 T10-30	30	1F	95.49	12	39	93.6	97	37	47	60	0.74
32 T10-32	32	1F	101.86	12	42	100.0	106	37	47	65	0.85
32 T10-36	36	1F	114.59	16	45	112.7	120	37	47	70	1.07
32 T10-40	40	1F	127.32	16	52	125.4	131	37	47	80	1.32
32 T10-44	44	1	140.06	16	57	138.2	-	37	47	88	1.61
32 T10-48	48	1	152.79	16	62	150.9	-	37	47	95	1.93
32 T10-60	60	1	190.99	16	72	189.1	-	37	47	110	3.00
10mm Pitch Pulleys for 50mm Wide Belt Ref. 50T10											
50 T10-18	18	1F	57.30	10	26	55.4	60	56	66	40	0.43
50 T10-19	19	1F	60.48	10	28	58.6	66	56	66	44	0.47
50 T10-20	20	1F	63.66	12	30	61.8	66	56	66	46	0.52
50 T10-22	22	1F	70.03	12	34	68.2	75	56	66	52	0.57
50 T10-24	24	1F	76.39	12	38	74.5	83	56	66	58	0.74
50 T10-25	25	1F	79.58	12	39	77.7	83	56	66	60	0.77
50 T10-26	26	1F	82.76	12	39	80.9	87	56	66	60	0.82
50 T10-27	27	1F	85.94	12	39	84.1	91	56	66	60	0.91
50 T10-28	28	1F	89.13	12	39	87.2	93	56	66	60	0.96
50 T10-30	30	1F	95.49	12	39	93.6	97	56	66	60	1.17
50 T10-32	32	1F	101.86	12	42	100.0	106	56	66	65	1.30
50 T10-36	36	1F	114.59	16	45	112.7	120	56	66	70	1.64
50 T10-40	40	1F	127.32	16	52	125.4	131	56	66	80	2.00
50 T10-44	44	1	140.06	16	57	138.2	-	56	66	88	2.36
50 T10-48	48	1	152.79	16	62	150.9	-	56	66	95	2.83
50 T10-60	60	1	190.99	16	72	189.1	-	56	66	110	4.37

Pulley Installation

Correct and accurate installation of Timing Drives is essential. Pulley alignment and shaft parallelism is very important as misalignment of the drive will cause unequal loading across the belt width and edge wear of belt on flanges. Pulley alignment can be checked by placing a straight edge against the outside edge of the pulleys and adjusting so contact made evenly across both pulleys.

The shafts should be located within a rigid framework, as any distortion under load could result in a reduction of centre distance which will cause jumping of belt on pulley teeth. If idlers are used they must be locked firmly into position after correct belt tensioning. Refer to page 10 for additional information on drive installation.

Tel +44 121 360 0155

Fax +44 121 325 1079

Email sales@crossmorse.com

Pulleys for Metric Polyurethane AT 5 Belts



AT Series Timing Pulleys

Designed to complete the power Transmission package for the enhanced power 'AT' series belts, are the Cross pilot bore stock pulleys for AT5 and AT10 belt drives.

The 'AT' series belts provide increased power capacity in a Polyurethane belt by increasing the belt tooth size and also the tension members.

The increased tooth width of AT series belts increases both the strength and stiffness of the tooth improving meshing with the pulley's also the longer flat surface of the teeth enables better transmission of radial loads.

Higher strength tension members improve pitch accuracy along with increasing the tensile strength of the belt, which combined with the stronger teeth enables increase in power transmitted by approx 50% over the 'T' series belts.

The 'AT' belt design provides improved accuracy in linear drives, with reduced backlash when using standard pulleys. The longer tooth reduces polygon effect which combined with the opportunity to reduce belt width enables reduction in noise levels.

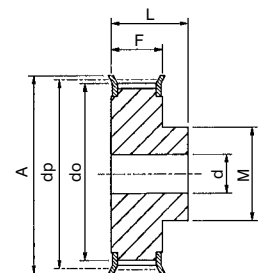
Cross offer AT5 and AT10 pulleys as standard, but can also manufacture to customers design including AT20.

Catalogue No.	No. Teeth Z	Pulley Type	Pitch Circle Diameter dp	Min. Bore d	Max Bore d	Outside Diameter do	Flange Diameter A	Pulley Width F	Bore Length L	Hub Diameter M	Approx. Weight kg
5mm Pitch Pulleys for 10mm Wide Belt Ref. 10AT 5											
10AT5-12	12	1F	19.10	4	7	18.2	23.0	15	21	11	.016
10AT5-14	14	1F	22.28	4	9	21.4	25.0	15	21	14	.019
10AT5-15	15	1F	23.87	6	10	23.0	28.0	15	21	16	.021
10AT5-16	16	1F	25.46	6	11	24.6	32.0	15	21	18	.025
10AT5-18	18	1F	28.65	6	13	27.8	32.0	15	21	20	.031
10AT5-19	19	1F	30.24	6	14	29.4	36.0	15	21	22	.036
10AT5-20	20	1F	31.83	6	15	31.0	36.0	15	21	23	.038
10AT5-22	22	1F	35.01	6	15	34.1	38.0	15	21	24	.046
10AT5-24	24	1F	38.20	6	17	37.4	42.0	15	21	26	.054
10AT5-25	25	1F	39.79	6	17	38.9	44.0	15	21	26	.058
10AT5-26	26	1F	41.38	6	17	40.6	44.0	15	21	26	.062
10AT5-27	27	1F	42.97	8	19	42.2	48.0	15	21	30	.064
10AT5-28	28	1F	44.56	8	20	43.7	48.0	15	21	32	.071
10AT5-30	30	1F	47.75	8	22	46.9	51.0	15	21	34	.075
10AT5-32	32	1F	50.93	8	23	50.1	54.0	15	21	36	.088
10AT5-36	36	1F	57.30	8	24	56.4	64.0	15	21	38	.114
10AT5-40	40	1F	63.66	8	26	62.8	66.5	15	21	40	.138
10AT5-42	42	1F	66.84	8	26	66.0	70.0	15	21	40	.153
10AT5-44	44	1	70.03	8	29	69.2	-	15	21	45	.170
10AT5-48	48	1	76.39	8	32	75.5	-	15	21	50	.200
10AT5-60	60	1	95.49	8	42	94.6	-	15	21	65	.308
5mm Pitch Pulleys for 16mm Wide Belt Ref. 16AT 5											
16AT5-12	12	1F	19.10	4	7	18.2	23.0	21	27	11	.022
16AT5-14	14	1F	22.28	4	9	21.4	25.0	21	27	14	.027
16AT5-15	15	1F	23.87	6	10	23.0	28.0	21	27	16	.030
16AT5-16	16	1F	25.46	6	11	24.6	32.0	21	27	18	.036
16AT5-18	18	1F	28.65	6	13	27.8	32.0	21	27	20	.044
16AT5-19	19	1F	30.24	6	14	29.4	36.0	21	27	22	.050
16AT5-20	20	1F	31.83	6	15	31.0	36.0	21	27	23	.054
16AT5-22	22	1F	35.01	6	15	34.1	38.0	21	27	24	.055
16AT5-24	24	1F	38.20	6	17	37.4	42.0	21	27	26	.077
16AT5-25	25	1F	39.79	6	17	38.9	44.0	21	27	26	.082
16AT5-26	26	1F	41.38	6	17	40.6	44.0	21	27	26	.086
16AT5-27	27	1F	42.97	8	19	42.2	48.0	21	27	30	.092
16AT5-28	28	1F	44.56	8	20	43.7	48.0	21	27	32	.094
16AT5-30	30	1F	47.75	8	22	46.9	51.0	21	27	34	.106
16AT5-32	32	1F	50.93	8	23	50.1	54.0	21	27	36	.124
16AT5-36	36	1F	57.30	8	24	56.4	64.0	21	27	38	.160
16AT5-40	40	1F	63.66	8	26	62.8	66.5	21	27	40	.195
16AT5-42	42	1F	66.84	8	26	66.0	70.0	21	27	40	.206
16AT5-44	44	1	70.03	8	29	69.2	-	21	27	45	.230
16AT5-48	48	1	76.39	8	32	75.5	-	21	27	50	.282
16AT5-60	60	1	95.49	8	42	94.6	-	21	27	65	.432
5mm Pitch Pulleys for 25mm Wide Belt Ref. 25AT 5											
25AT5-12	12	1F	19.10	4	7	18.2	23.0	30	36	11	.032
25AT5-14	14	1F	22.28	4	9	21.4	25.0	30	36	14	.038
25AT5-15	15	1F	23.87	6	10	23.0	28.0	30	36	16	.042
25AT5-16	16	1F	25.46	6	11	24.6	32.0	30	36	18	.052
25AT5-18	18	1F	28.65	6	13	27.8	32.0	30	36	20	.063
25AT5-19	19	1F	30.24	6	14	29.4	36.0	30	36	22	.072
25AT5-20	20	1F	31.83	6	15	31.0	36.0	30	36	23	.078
25AT5-22	22	1F	35.01	6	15	34.1	38.0	30	36	24	.082
25AT5-24	24	1F	38.20	8	17	37.4	42.0	30	36	26	.110
25AT5-25	25	1F	39.79	8	17	38.9	44.0	30	36	26	.117
25AT5-26	26	1F	41.38	8	17	40.6	44.0	30	36	26	.121
25AT5-27	27	1F	42.97	8	19	42.2	48.0	30	36	30	.123
25AT5-28	28	1F	44.56	8	20	43.7	48.0	30	36	32	.127
25AT5-30	30	1F	47.75	8	22	46.9	51.0	30	36	34	.152
25AT5-32	32	1F	50.93	8	23	50.1	54.0	30	36	36	.177
25AT5-36	36	1F	57.30	8	24	56.4	64.0	30	36	38	.232
25AT5-40	40	1F	63.66	8	26	62.8	66.5	30	36	40	.278
25AT5-42	42	1F	66.84	8	26	66.0	70.0	30	36	40	.296
25AT5-44	44	1	70.03	8	29	69.2	-	30	36	45	.327
25AT5-48	48	1	76.39	8	32	75.5	-	30	36	50	.402
25AT5-60	60	1	95.49	8	42	94.6	-	30	36	65	.617

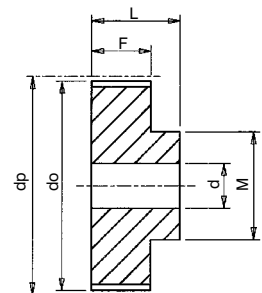
Pulley Types

The Pulley types referred to in tables are as drawings below. Suffix 'F' indicates pulley has flanges.

Std. Pulleys can be reworked to customers bore and keywaying requirement.



Type 1F



Type 1

All pulleys machined from aluminium for low weight and inertia, and fitted as indicated with steel flanges. All dimensions in mm

Tel +44 121 360 0155 Fax +44 121 325 1079 Email sales@crossmorse.com

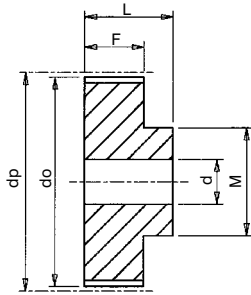
Pulleys for Metric Polyurethane AT10 Belts



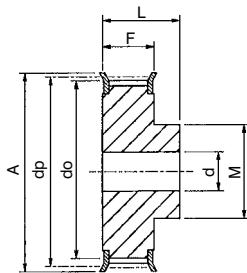
Pulley Types

The Pulley types referred to in tables are as drawings below. Suffix 'F' indicates pulley has flanges.

Std. Pulleys can be reworked to customers bore and keywaying requirements.



Type 1



Type 1F

All pulleys machined from aluminium for low weight and inertia, and fitted as indicated with steel flanges. All dimensions in mm

Catalogue No.	No. Teeth Z	Pulley Type	Pitch Circle Dia. dp	Min. Bore d	Max. Bore d	Outside Diameter do	Flange Dia. A	Pulley Width F	Bore Length L	Hub Dia. M	Approx. Weight kg
10mm Pitch Pulleys for 16mm Wide Belt Ref. 16AT10											
16 AT10-15	15	1F	47.75	8	20	45.9	51	21	31	31	0.12
16 AT10-16	16	1F	50.93	8	23	49.1	54	21	31	35	0.14
16 AT10-18	18	1F	57.30	8	26	55.4	60	21	31	40	0.17
16 AT10-19	19	1F	60.48	8	28	58.6	66	21	31	44	0.19
16 AT10-20	20	1F	63.66	8	30	61.8	66	21	31	46	0.21
16 AT10-22	22	1F	70.03	8	34	68.2	75	21	31	52	0.26
16 AT10-24	24	1F	76.39	8	38	74.5	83	21	31	58	0.29
16 AT10-25	25	1F	79.58	8	39	77.7	83	21	31	60	0.31
16 AT10-26	26	1F	82.76	8	39	80.9	87	21	31	60	0.36
16 AT10-27	27	1F	85.94	8	39	84.1	91	21	31	60	0.37
16 AT10-28	28	1F	89.13	8	39	87.2	93	21	31	60	0.40
16 AT10-30	30	1F	95.49	8	39	93.6	97	21	31	60	0.44
16 AT10-32	32	1F	101.86	10	42	100.0	106	21	31	65	0.49
16 AT10-36	36	1F	114.59	10	45	112.7	120	21	31	70	0.63
16 AT10-40	40	1F	127.32	10	52	125.4	135	21	31	80	0.77
16 AT10-44	44	1	140.06	10	57	138.2	-	21	31	88	1.00
16 AT10-48	48	1	152.79	16	62	150.9	-	21	31	95	1.09
16 AT10-60	60	1	190.99	16	72	189.1	-	21	31	110	1.70
10mm Pitch Pulleys for 25mm Wide Belt Ref. 25AT10											
25 AT10-15	15	1F	47.75	8	21	45.9	51	30	40	32	0.16
25 AT10-16	16	1F	50.93	8	23	49.1	54	30	40	35	0.18
25 AT10-18	18	1F	57.30	8	26	55.4	60	30	40	40	0.23
25 AT10-19	19	1F	60.48	8	28	58.6	66	30	40	44	0.25
25 AT10-20	20	1F	63.66	8	30	61.8	66	30	40	46	0.28
25 AT10-22	22	1F	70.03	8	34	68.2	75	30	40	52	0.34
25 AT10-24	24	1F	76.39	8	38	74.5	83	30	40	58	0.39
25 AT10-25	25	1F	79.58	8	39	77.7	83	30	40	60	0.42
25 AT10-26	26	1F	82.76	8	39	80.9	87	30	40	60	0.48
25 AT10-27	27	1F	85.94	8	39	84.1	91	30	40	60	0.54
25 AT10-28	28	1F	89.13	8	39	87.2	93	30	40	60	0.55
25 AT10-30	30	1F	95.49	8	39	93.6	97	30	40	60	0.64
25 AT10-32	32	1F	101.86	10	42	100.0	106	30	40	65	0.69
25 AT10-36	36	1F	114.59	10	45	112.7	120	30	40	70	0.87
25 AT10-40	40	1F	127.32	10	52	125.4	135	30	40	80	1.07
25 AT10-44	44	1	140.06	10	57	138.2	-	30	40	88	1.35
25 AT10-48	48	1	152.79	16	62	150.9	-	30	40	95	1.52
25 AT10-60	60	1	190.99	16	72	189.1	-	30	40	110	2.34
10mm Pitch Pulleys for 32mm Wide Belt Ref. 32AT10-											
32 AT10-18	18	1F	57.30	10	26	55.4	60	37	47	40	0.26
32 AT10-19	19	1F	60.48	10	28	58.6	66	37	47	44	0.28
32 AT10-20	20	1F	63.66	12	30	61.8	66	37	47	46	0.32
32 AT10-22	22	1F	70.03	12	34	68.2	75	37	47	52	0.40
32 AT10-24	24	1F	76.39	12	38	74.5	83	37	47	58	0.48
32 AT10-25	25	1F	79.58	12	39	77.7	83	37	47	60	0.53
32 AT10-26	26	1F	82.76	12	39	80.9	87	37	47	60	0.57
32 AT10-27	27	1F	85.94	12	39	84.1	91	37	47	60	0.60
32 AT10-28	28	1F	89.13	12	39	87.2	93	37	47	60	0.64
32 AT10-30	30	1F	95.49	12	39	93.6	97	37	47	60	0.74
32 AT10-32	32	1F	101.86	12	42	100.0	106	37	47	65	0.85
32 AT10-36	36	1F	114.59	16	45	112.7	120	37	47	70	1.07
32 AT10-40	40	1F	127.32	16	52	125.4	135	37	47	80	1.32
32 AT10-44	44	1	140.06	16	57	138.2	-	37	47	88	1.61
32 AT10-48	48	1	152.79	16	62	150.9	-	37	47	95	1.93
32 AT10-60	60	1	190.99	16	72	189.1	-	37	47	110	3.00
10mm Pitch Pulleys for 50mm Wide Belt Ref. 50AT10											
50 AT10-18	18	1F	57.30	10	26	55.4	60	56	66	40	0.43
50 AT10-19	19	1F	60.48	10	28	58.6	66	56	66	44	0.47
50 AT10-20	20	1F	63.66	12	30	61.8	66	56	66	46	0.52
50 AT10-22	22	1F	70.03	12	34	68.2	75	56	66	52	0.57
50 AT10-24	24	1F	76.39	12	38	74.5	83	56	66	58	0.74
50 AT10-25	25	1F	79.58	12	39	77.7	83	56	66	60	0.77
50 AT10-26	26	1F	82.76	12	39	80.9	87	56	66	60	0.82
50 AT10-27	27	1F	85.94	12	39	84.1	91	56	66	60	0.91
50 AT10-28	28	1F	89.13	12	39	87.2	93	56	66	60	0.96
50 AT10-30	30	1F	95.49	12	39	93.6	97	56	66	60	1.17
50 AT10-32	32	1F	101.86	12	42	100.0	106	56	66	65	1.30
50 AT10-36	36	1F	114.59	16	45	112.7	120	56	66	70	1.64
50 AT10-40	40	1F	127.32	16	52	125.4	135	56	66	80	2.00
50 AT10-44	44	1	140.06	16	57	138.2	-	56	66	88	2.36
50 AT10-48	48	1	152.79	16	62	150.9	-	56	66	95	2.83
50 AT10-60	60	1	190.99	16	72	189.1	-	56	66	110	4.37

Pulley Installation

Correct and accurate installation of Timing Drives is essential. Pulley alignment and shaft parallelism is very important as misalignment of the drive will cause unequal loading across the belt width and edge wear of belt on flanges. Pulley alignment can be checked by placing a straight edge against the outside edge of the pulleys and adjusting so contact made evenly across both pulleys.

The shafts should be located within a rigid framework, as any distortion under load could result in a reduction of centre distance which will cause jumping of belt on pulley teeth. If idlers are used they must be locked firmly into position after correct belt tensioning.

Refer to page 10 for additional information on drive installation.

Tel +44 121 360 0155

Fax +44 121 325 1079

Email sales@crossmorse.com