

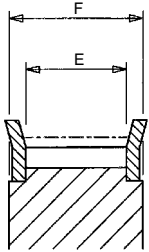
HTD Timing Pulleys - 3M Belts



Cross & Morse HTD Pulleys are manufactured to close tolerances to ensure concentric running, and have precision generated gear teeth to match the high power and speed capabilities of HTD drive belts. Only high quality materials are used for pulley manufacture; aluminium being selected for 3M and larger 5M pulleys to keep weight and inertia low; all other pulleys machined from medium carbon steel bar or 260 Grade cast iron and finished with zinc phosphate for corrosion protection.

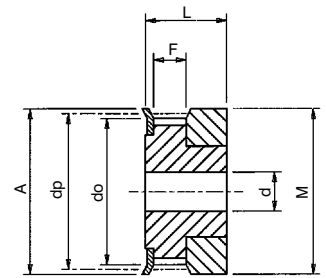
Standard pulleys are offered with a large range of tooth sizes in widths to suit all standard HTD belts. Pulleys for 5M, 8M and 14M drives are available with parallel pilot bore for reworking to customers requirements, bored for shaft clamping elements, or with taper bore to be combined with stock taper brushes for the complete off-the-shelf drive. Pulleys of non-standard widths or numbers of teeth can be supplied to order, or teeth can be generated on customers own blanks.

Smaller pulleys are fitted with two flanges to retain the drive belt, these being identified in tables by suffix 'F' on pulley type. The flanges are pressed onto pulley body and retained by spin rivetting.

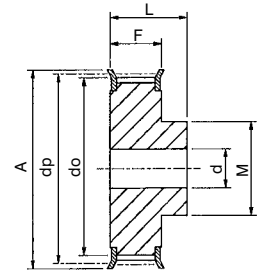


Belt Size	3M		5M			8M				14M						
	Belt Width mm		9	15	9	15	25	20	30	50	85	40	55	85	115	170
E	10.2	17	11.9	17.9	27.9	23	33	55	90	47	63	95	126	180		
F	13.4	20	14.5	20.5	30.5	28	38	60	95	54	70	102	133	187		

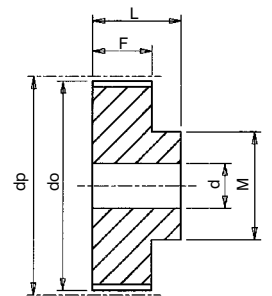
Catalogue No.	No. Teeth Z	Pulley Type	Pitch Circle Diameter dp	Min. Bore d	Max Bore d	Outside Diameter do	Flange Diameter A	Pulley Width F	Bore Length L	Hub Diameter M	Approx. Weight kg
3mm Pitch Pulleys for 6mm wide Belts. Ref. 3M06											
10-3M-06	10	0F	9.55	4.0	4.0	8.8	13.0	7.2	14.5	13.0	.003
12-3M-06	12	0F	11.46	4.0	6.0	10.7	15.0	7.2	14.5	15.0	.005
14-3M-06	14	0F	13.37	4.0	7.0	12.6	16.0	7.2	14.5	16.0	.006
15-3M-06	15	0F	14.32	4.0	8.0	13.6	17.5	7.2	14.5	17.5	.007
16-3M-06	16	1F	15.28	4.0	6.5	14.5	18.0	9.8	17.5	10.0	.006
18-3M-06	18	1F	17.19	6.0	7.0	16.4	20.0	9.8	17.5	11.0	.007
20-3M-06	20	1F	19.10	6.0	8.0	18.3	23.0	9.8	17.5	13.0	.008
21-3M-06	21	1F	20.05	6.0	8.5	19.3	25.0	9.8	17.5	13.0	.011
22-3M-06	22	1F	21.01	6.0	8.5	20.3	25.0	9.8	17.5	13.0	.012
24-3M-06	24	1F	22.92	6.0	8.5	22.2	25.0	9.8	17.5	13.0	.014
26-3M-06	26	1F	24.83	6.0	10.5	24.1	28.0	9.8	17.5	16.0	.016
28-3M-06	28	1F	26.74	6.0	11.5	26.0	32.0	9.8	17.5	18.0	.021
30-3M-06	30	1F	28.65	6.0	12.7	27.9	32.0	9.8	17.5	20.0	.024
32-3M-06	32	1F	30.55	6.0	14.0	29.8	36.0	9.8	17.5	22.0	.028
36-3M-06	36	1F	34.38	6.0	17.0	33.6	38.0	10.3	18.0	26.0	.039
40-3M-06	40	1F	38.20	6.0	18.5	37.4	42.0	10.3	18.0	28.0	.047
44-3M-06	44	1F	42.02	6.0	22.5	41.3	48.0	10.3	18.0	33.0	.062
48-3M-06	48	1	45.84	8.0	22.5	45.1	-	10.3	18.6	33.0	.062
60-3M-06	60	1	57.30	8.0	22.5	56.5	-	10.3	18.6	33.0	.091
72-3M-06	72	1	68.75	8.0	22.5	68.0	-	10.3	18.6	33.0	.124
3mm Pitch Pulleys for 9mm wide Belts. Ref. 3M09											
10-3M-09	10	0F	9.55	4.0	4.0	8.8	13.0	10.2	17.5	13.0	.004
12-3M-09	12	0F	11.46	4.0	6.0	10.7	15.0	10.2	17.5	15.0	.006
14-3M-09	14	0F	13.37	4.0	7.0	12.6	16.0	10.2	17.5	16.0	.007
15-3M-09	15	0F	14.32	4.0	8.0	13.6	17.5	10.2	17.5	17.5	.008
16-3M-09	16	1F	15.28	4.0	6.5	14.5	18.0	12.8	20.6	10.0	.007
18-3M-09	18	1F	17.19	6.0	7.0	16.4	20.0	12.8	20.6	11.0	.008
20-3M-09	20	1F	19.10	6.0	8.0	18.3	23.0	12.8	20.6	13.0	.010
21-3M-09	21	1F	20.05	6.0	8.5	19.3	25.0	12.8	20.6	13.0	.013
22-3M-09	22	1F	21.01	6.0	8.5	20.3	25.0	12.8	20.6	13.0	.014
24-3M-09	24	1F	22.92	6.0	8.5	22.2	25.0	12.8	20.6	13.0	.016
26-3M-09	26	1F	24.83	6.0	10.5	24.1	28.0	12.8	20.6	16.0	.018
28-3M-09	28	1F	26.74	6.0	11.5	26.0	32.0	12.8	20.6	18.0	.024
30-3M-09	30	1F	28.65	6.0	12.7	27.9	32.0	12.8	20.6	20.0	.028
32-3M-09	32	1F	30.55	6.0	14.0	29.8	36.0	12.8	20.6	22.0	.032
36-3M-09	36	1F	34.38	6.0	17.0	33.6	38.0	13.4	22.2	26.0	.045
40-3M-09	40	1F	38.20	6.0	18.5	37.4	42.0	13.4	22.2	28.0	.055
44-3M-09	44	1F	42.02	6.0	22.5	41.3	48.0	13.4	22.2	33.0	.074
48-3M-09	48	1	45.84	8.0	22.5	45.1	-	13.4	22.2	33.0	.074
60-3M-09	60	1	57.30	8.0	22.5	56.5	-	13.4	22.2	33.0	.106
72-3M-09	72	1	68.75	8.0	22.5	68.0	-	13.4	22.2	33.0	.145
3mm Pitch Pulleys for 15mm wide Belts. Ref. 3M15											
10-3M-15	10	0F	9.55	4.0	4.0	8.8	13.0	17.0	26.0	13.0	.006
12-3M-15	12	0F	11.46	4.0	6.0	10.7	15.0	17.0	26.0	15.0	.008
14-3M-15	14	0F	13.37	4.0	7.0	12.6	16.0	17.0	26.0	16.0	.010
15-3M-15	15	0F	14.32	4.0	8.0	13.6	17.5	17.0	26.0	17.5	.012
16-3M-15	16	1F	15.28	4.0	6.5	14.5	18.0	19.5	26.0	10.0	.010
18-3M-15	18	1F	17.19	6.0	7.0	16.4	20.0	19.5	26.0	11.0	.012
20-3M-15	20	1F	19.10	6.0	8.0	18.3	23.0	19.5	26.0	13.0	.014
21-3M-15	21	1F	20.05	6.0	8.5	19.3	25.0	19.5	26.0	13.0	.016
22-3M-15	22	1F	21.01	6.0	8.5	20.3	25.0	19.5	26.0	13.0	.018
24-3M-15	24	1F	22.92	6.0	8.5	22.2	25.0	19.5	26.0	13.0	.020
26-3M-15	26	1F	24.83	6.0	10.5	24.1	28.0	19.5	26.0	16.0	.027
28-3M-15	28	1F	26.74	6.0	11.5	26.0	32.0	19.5	26.0	18.0	.030
30-3M-15	30	1F	28.65	6.0	12.7	27.9	32.0	19.5	26.0	20.0	.038
32-3M-15	32	1F	30.55	6.0	14.0	29.8	36.0	19.5	26.0	22.0	.045
36-3M-15	36	1F	34.38	6.0	17.0	33.6	38.0	20.0	30.0	26.0	.060
40-3M-15	40	1F	38.20	6.0	18.5	37.4	42.0	20.0	30.0	28.0	.075
44-3M-15	44	1F	42.02	6.0	22.5	41.3	48.0	20.0	30.0	33.0	.095
48-3M-15	48	1	45.84	8.0	22.5	45.1	-	20.0	30.0	33.0	.103
60-3M-15	60	1	57.30	8.0	22.5	56.5	-	20.0	30.0	33.0	.150
72-3M-15	72	1	68.75	8.0	22.5	68.0	-	20.0	30.0	33.0	.210



Type 0F
Material: Aluminium



Type 1F
Material: Aluminium



Type 1
Material: Aluminium

Tel +44 121 360 0155

Fax +44 121 325 1079

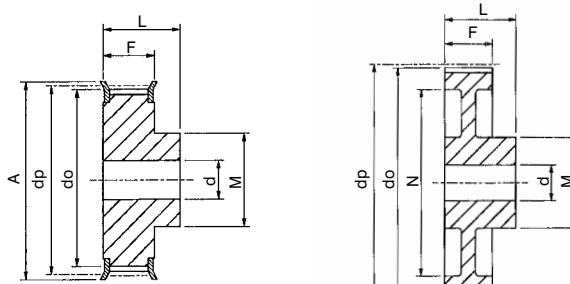
Email sales@crossmorse.com

HTD Timing Pulleys - 5M Belts



Pulley Types

Pulley types referred to in tables are as drawings below. The suffix 'F' indicates pulley flanges



Type 1F

Material: Steel

Type 2

Material: Aluminium

Catalogue No.	No. Teeth Z	Pulley Type	Pitch Circle Diameter dp	Min. Bore d	Max Bore d	Outside Diameter do	Flange Diameter A	Pulley Width F	Bore Length L	Hub Diameter M	Rim Diameter N	Approx. Weight kg
5mm Pitch Pulleys for 9mm wide Belts. Ref. 5M09												
12-5M-09	12	1F	19.10	4.0	7	18.0	23.0	14.5	20.0	12.0	-	.028
14-5M-09	14	1F	22.28	6.0	8	21.1	25.0	14.5	20.0	13.0	-	.034
15-5M-09	15	1F	23.87	6.0	10	22.7	28.0	14.5	20.0	16.0	-	.042
16-5M-09	16	1F	25.46	6.0	11	24.3	28.0	14.5	20.0	16.5	-	.050
18-5M-09	18	1F	28.65	6.0	13	27.5	32.0	14.5	20.0	20.0	-	.070
20-5M-09	20	1F	31.83	6.0	14	30.7	36.0	14.5	22.5	23.0	-	.094
21-5M-09	21	1F	33.42	6.0	15	32.3	38.0	14.5	22.5	24.0	-	.110
22-5M-09	22	1F	35.01	6.0	16	33.9	38.0	14.5	22.5	25.5	-	.118
24-5M-09	24	1F	38.20	6.0	18	37.1	42.0	14.5	22.5	27.0	-	.145
26-5M-09	26	1F	41.38	6.0	20	40.2	44.0	14.5	22.5	30.0	-	.170
28-5M-09	28	1F	44.56	6.0	20	43.4	48.0	14.5	22.5	30.5	-	.200
30-5M-09	30	1F	47.75	6.0	24	46.6	51.0	14.5	22.5	35.0	-	.236
32-5M-09	32	1F	50.93	8.0	26	49.8	54.0	14.5	22.5	38.0	-	.270
36-5M-09	36	1F	57.30	8.0	26	56.2	60.0	14.5	22.5	38.0	-	.324
40-5M-09	40	1F	63.66	8.0	26	62.5	70.0	14.5	22.5	38.0	-	.400
44-5M-09	44	2	70.03	8.0	26	68.9	-	14.5	25.5	38.0	54	.170
48-5M-09	48	2	76.39	8.0	26	75.3	-	14.5	25.5	45.0	61	.182
60-5M-09	60	2	95.49	8.0	30	94.4	-	14.5	25.5	45.0	80	.230
72-5M-09	72	2	114.59	8.0	30	113.5	-	14.5	25.5	45.0	100	.270
5mm Pitch Pulleys for 15mm wide Belts. Ref. 5M15												
12-5M-15	12	1F	19.10	4.0	7	18.0	23.0	20.5	26.0	12.0	-	.034
14-5M-15	14	1F	22.28	6.0	8	21.1	25.0	20.5	26.0	13.0	-	.046
15-5M-15	15	1F	23.87	6.0	10	22.7	28.0	20.5	26.0	16.0	-	.056
16-5M-15	16	1F	25.46	6.0	11	24.3	28.0	20.5	26.0	16.5	-	.064
18-5M-15	18	1F	28.65	6.0	13	27.5	32.0	20.5	26.0	20.0	-	.086
20-5M-15	20	1F	31.83	6.0	14	30.7	36.0	20.5	26.0	23.0	-	.112
21-5M-15	21	1F	33.42	6.0	15	32.3	38.0	20.5	26.0	24.0	-	.130
22-5M-15	22	1F	35.01	6.0	16	33.9	38.0	20.5	26.0	25.5	-	.140
24-5M-15	24	1F	38.20	6.0	18	37.1	42.0	20.5	28.0	27.0	-	.180
26-5M-15	26	1F	41.38	6.0	20	40.2	44.0	20.5	28.0	30.0	-	.220
28-5M-15	28	1F	44.56	6.0	20	43.4	48.0	20.5	28.0	30.5	-	.250
30-5M-15	30	1F	47.75	6.0	24	46.6	51.0	20.5	28.0	35.0	-	.300
32-5M-15	32	1F	50.93	8.0	26	49.8	54.0	20.5	28.0	38.0	-	.350
36-5M-15	36	1F	57.30	8.0	26	56.2	60.0	20.5	28.0	38.0	-	.426
40-5M-15	40	1F	63.66	8.0	26	62.5	70.0	20.5	28.0	38.0	-	.520
44-5M-15	44	2	70.03	8.0	26	68.9	-	20.5	30.0	38.0	54	.225
48-5M-15	48	2	76.39	8.0	30	75.3	-	20.5	30.0	45.0	61	.187
60-5M-15	60	2	95.49	8.0	30	94.4	-	20.5	30.0	45.0	80	.305
72-5M-15	72	2	114.59	8.0	30	113.5	-	20.5	30.0	45.0	100	.375
5mm Pitch Pulleys for 25mm wide Belts. Ref. 5M25												
12-5M-25	12	1F	19.10	4.0	7	18.0	23.0	30.5	36.0	12.0	-	0.50
14-5M-25	14	1F	22.28	6.0	8	21.1	25.0	30.5	36.0	13.0	-	0.70
15-5M-25	15	1F	23.87	6.0	10	22.7	28.0	30.5	36.0	16.0	-	0.80
16-5M-25	16	1F	25.46	6.0	11	24.3	28.0	30.5	36.0	16.5	-	1.00
18-5M-25	18	1F	28.65	6.0	13	27.5	32.0	30.5	36.0	20.0	-	1.20
20-5M-25	20	1F	31.83	6.0	14	30.7	36.0	30.5	36.0	23.0	-	1.60
21-5M-25	21	1F	33.42	6.0	15	32.3	38.0	30.5	38.0	24.0	-	1.80
22-5M-25	22	1F	35.01	6.0	16	33.9	38.0	30.5	38.0	25.5	-	2.10
24-5M-25	24	1F	38.20	6.0	18	37.1	42.0	30.5	38.0	27.0	-	2.50
26-5M-25	26	1F	41.38	6.0	20	40.2	44.0	30.5	38.0	30.0	-	3.00
28-5M-25	28	1F	44.56	6.0	20	43.4	48.0	30.5	38.0	30.5	-	3.50
30-5M-25	30	1F	47.75	6.0	24	46.6	51.0	30.5	38.0	35.0	-	4.20
32-5M-25	32	1F	50.93	8.0	26	49.8	54.0	30.5	38.0	38.0	-	4.85
36-5M-25	36	1F	57.30	8.0	26	56.2	60.0	30.5	38.0	38.0	-	5.95
40-5M-25	40	1F	63.66	8.0	26	62.5	70.0	30.5	38.0	38.0	-	7.45
44-5M-25	44	2	70.03	8.0	26	68.9	-	30.5	40.0	38.0	54	.320
48-5M-25	48	2	76.39	8.0	30	75.3	-	30.5	40.0	45.0	61	.275
60-5M-25	60	2	95.49	8.0	30	94.4	-	30.5	40.0	45.0	80	.435
72-5M-25	72	2	114.59	8.0	30	113.5	-	30.5	40.0	45.0	100	.525

All dimensions in mm. Other sizes of Pulleys can be supplied on short delivery.

Pulleys can be supplied bored and keywayed. For Taper Bore Pulleys see page 21.

Pulley Installation

Correct and accurate installation of Timing Drives is essential. Pulley alignment and shaft parallelism is very important as misalignment of the drive will cause unequal loading across the belt width and edge wear of belt on flanges. Pulley alignment can be checked by placing a straight edge against the outside edge of the pulleys and adjusting so contact made evenly across both pulleys. The shaft should be located within a rigid framework, as any distortion under load could result in a reduction of centre distance which will cause jumping of belt on pulley teeth. If idlers are used they must be locked firmly into position after correct belt tensioning. Refer to page 10 for additional on drive installation.

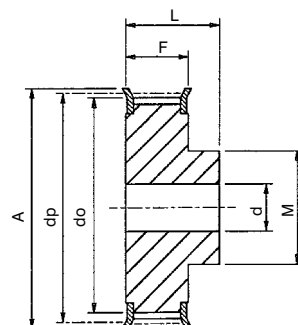
Plain Bore Pulleys 8M Belts



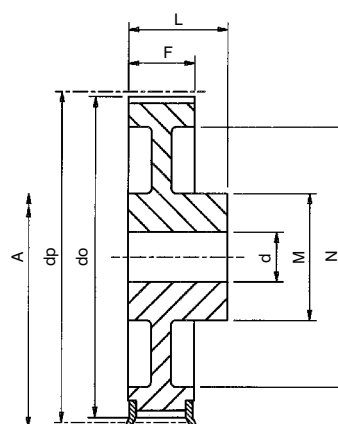
Catalogue No.	No. Teeth Z	Pulley Type	Pitch Circle Diameter dp	Min. Bore d	Max Bore d	Outside Diameter do	Flange Diameter A	Pulley Width F	Bore Length L	Hub Diameter M	Rim Diameter N	Approx. Weight kg
8mm Pitch Pulleys for 20mm wide Belts. Ref. 8M20												
P22-8M-20	22	1F	56.02	12	29	54.7	60	28	38	43	-	0.54
P24-8M-20	24	1F	61.12	12	30	59.8	66	28	38	45	-	0.65
P26-8M-20	26	1F	66.21	12	32	64.9	70	28	38	48	-	0.80
P28-8M-20	28	1F	71.30	15	34	70.1	75	28	38	50	-	0.87
P30-8M-20	30	1F	76.39	15	36	75.1	83	28	38	55	-	1.02
P32-8M-20	32	1F	81.49	15	40	80.2	87	28	38	60	-	1.20
P34-8M-20	34	1F	86.58	15	46	85.2	91	28	38	70	-	1.40
P36-8M-20	36	1F	91.67	15	50	90.3	97	28	38	75	-	1.55
P38-8M-20	38	1F	96.77	15	50	95.4	102	28	38	75	-	1.65
P40-8M-20	40	1F	101.86	15	50	100.5	106	28	38	75	-	1.74
P44-8M-20	44	1F	112.05	15	50	110.7	120	28	38	75	-	2.10
P48-8M-20	48	1F	122.23	15	50	120.9	128	28	38	75	-	2.44
P56-8M-20	56	2F	142.60	15	54	141.2	150	28	38	80	116	2.60
P64-8M-20	64	2F	162.97	15	54	161.6	168	28	38	80	137	2.90
P72-8M-20	72	2F	183.35	15	54	182.0	192	28	38	80	158	3.10
P80-8M-20	80	2	203.72	15	54	202.4	-	28	38	90	180	3.80
P90-8M-20	90	2	229.18	15	54	227.8	-	28	38	90	204	4.20
P112-8M-20	112	2	285.21	18	54	283.8	-	28	38	90	254	5.20
P144-8M-20	144	2	366.69	20	54	365.3	-	28	38	90	336	7.50
P168-8M-20	168	2	427.81	20	60	426.4	-	28	38	100	400	10.00
P192-8M-20	192	2	488.92	20	60	487.6	-	28	38	100	460	14.40
8mm Pitch Pulleys for 30mm wide Belts. Ref. 8M30												
P22-8M-30	22	1F	56.02	12	29	54.7	60	38	48	43	-	0.69
P24-8M-30	24	1F	61.12	12	30	59.8	66	38	48	45	-	0.84
P26-8M-30	26	1F	66.21	12	32	64.9	70	38	48	48	-	1.00
P28-8M-30	28	1F	71.30	15	34	70.1	75	38	48	50	-	1.12
P30-8M-30	30	1F	76.39	15	36	75.1	83	38	48	55	-	1.32
P32-8M-30	32	1F	81.49	15	40	80.2	87	38	48	60	-	1.53
P34-8M-30	34	1F	86.58	15	46	85.2	91	38	48	70	-	1.80
P36-8M-30	36	1F	91.67	15	50	90.3	97	38	48	75	-	1.99
P38-8M-30	38	1F	96.77	15	50	95.4	102	38	48	75	-	2.27
P40-8M-30	40	1F	101.86	15	50	100.5	106	38	48	75	-	2.40
P44-8M-30	44	1F	112.05	15	50	110.7	120	38	48	75	-	2.80
P48-8M-30	48	1F	122.23	15	50	120.9	128	38	48	75	-	3.20
P56-8M-30	56	2F	142.60	15	60	141.2	150	38	48	90	116	3.60
P64-8M-30	64	2F	162.97	15	60	161.6	168	38	48	90	137	4.30
P72-8M-30	72	2F	183.35	15	63	182.0	192	38	48	95	158	4.80
P80-8M-30	80	2	203.72	15	60	202.4	-	38	48	100	180	5.10
P90-8M-30	90	2	229.18	15	60	227.8	-	38	48	100	204	5.70
P112-8M-30	112	2	285.21	18	60	283.8	-	38	48	100	254	6.80
P144-8M-30	144	2	366.69	20	60	365.3	-	38	48	100	336	9.30
P168-8M-30	168	2	427.81	20	60	426.4	-	38	48	100	400	11.40
P192-8M-30	192	2	488.92	20	60	487.6	-	38	48	100	460	16.00
8mm Pitch Pulleys for 50mm wide Belts. Ref. 8M50												
P22-8M-50	22	1F	56.02	12	29	54.7	60	60	70	43	-	1.00
P24-8M-50	24	1F	61.12	12	30	59.8	66	60	70	45	-	1.23
P26-8M-50	26	1F	66.21	15	32	64.9	70	60	70	48	-	1.50
P28-8M-50	28	1F	71.30	15	34	70.1	75	60	70	50	-	1.67
P30-8M-50	30	1F	76.39	15	36	75.1	83	60	70	55	-	1.97
P32-8M-50	32	1F	81.49	15	40	80.2	87	60	70	60	-	2.27
P34-8M-50	34	1F	86.58	15	44	85.2	91	60	70	66	-	2.69
P36-8M-50	36	1F	91.67	15	46	90.3	97	60	70	70	-	2.97
P38-8M-50	38	1F	96.77	15	50	95.4	102	60	70	75	-	3.23
P40-8M-50	40	1F	101.86	18	50	100.5	106	60	70	75	-	3.50
P44-8M-50	44	1F	112.05	18	50	110.7	120	60	70	75	-	3.90
P48-8M-50	48	1F	122.23	18	54	120.9	128	60	70	80	-	4.30
P56-8M-50	56	3F	142.60	18	60	141.2	150	60	60	90	116	5.00
P64-8M-50	64	3F	162.97	18	67	161.6	168	60	60	100	137	5.60
P72-8M-50	72	3F	183.35	18	67	182.0	192	60	60	100	158	6.80
P80-8M-50	80	3	203.72	18	66	202.4	-	60	60	110	180	6.90
P90-8M-50	90	3	229.18	18	66	227.8	-	60	60	110	204	8.60
P112-8M-50	112	3	285.21	18	66	283.8	-	60	60	110	254	9.60
P144-8M-50	144	3	366.69	20	66	365.3	-	60	60	110	336	13.80
P168-8M-50	168	3	427.81	20	72	426.4	-	60	60	120	400	16.00
P192-8M-50	192	3	488.92	20	78	487.6	-	60	60	130	460	22.40
8mm Pitch Pulleys for 85mm wide Belts. Ref. 8M85												
P22-8M-85	22	1F	56.02	12	29	54.7	60	95	105	43	-	1.55
P24-8M-85	24	1F	61.12	12	30	59.8	66	95	105	45	-	1.90
P26-8M-85	26	1F	66.21	12	32	64.9	70	95	105	48	-	2.25
P28-8M-85	28	1F	71.30	15	34	70.1	75	95	105	50	-	2.55
P30-8M-85	30	1F	76.39	15	36	75.1	83	95	105	55	-	3.00
P32-8M-85	32	1F	81.49	15	40	80.2	87	95	105	60	-	3.57
P34-8M-85	34	1F	86.58	15	44	85.2	91	95	105	66	-	4.00
P36-8M-85	36	1F	91.67	15	46	90.3	97	95	105	70	-	4.50
P38-8M-85	38	1F	96.77	15	50	95.4	102	95	105	75	-	5.00
P40-8M-85	40	1F	101.86	18	50	100.5	106	95	105	75	-	5.20
P44-8M-85	44	1F	112.05	18	50	110.7	120	95	105	75	-	6.60
P48-8M-85	48	1F	122.23	18	54	120.9	128	95	105	80	-	7.00
P56-8M-85	56	1F	142.60	18	54	141.2	150	95	105	90	-	10.00
P64-8M-85	64	3F	162.97	20	67	161.6	168	95	95	100	137	10.40
P72-8M-85	72	3F	183.35	20	67	182.0	192	95	95	100	158	11.40
P80-8M-85	80	3	203.72	20	66	202.4	-	95	95	110	180	11.10
P90-8M-85	90	3	229.18	20	66	227.8	-	95	95	110	204	12.20
P112-8M-85	112	3	285.21	24	66	283.8	-	95	95	110	254	15.00
P144-8M-85	144	3	366.69	24	66	365.3	-	95	95	110	336	21.50
P168-8M-85	168	3	427.81	24	72	426.4	-	95	95	120	400	24.10
P192-8M-85	192	3	488.92	24	78	487.6	-	95	95	130	460	30.60

Pulley Types

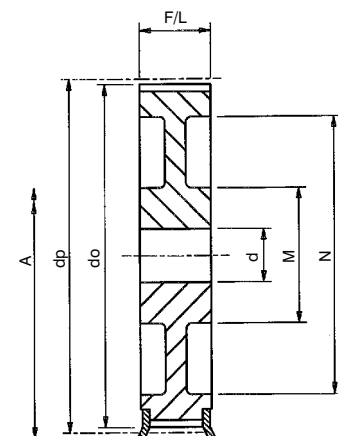
The Pulley types referred to in tables are as drawings below. Suffix 'F' indicates pulley has flanges. Pulley below dividing line in tables are manufactured in cast iron. Pulleys 112 teeth (80 teeth on 8M-85) and above incorporate lightening holes in design.



Type 1F
Material: Steel



Type 2/2F
Material: Steel or Cast Iron



Type 3/3F
Material: Steel or Cast Iron

*Non-stock items, manufactured to customer order only. All dimensions in mm. Standard Pulleys can be reworked to customers bore and keyway requirements

Tel +44 121 360 0155

Fax

Email sales@crossmorse.com

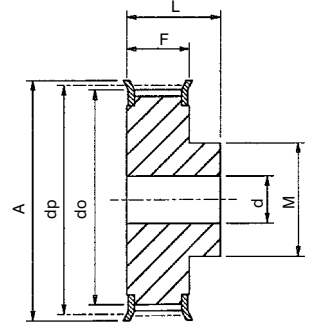
Plain Bore Pulleys 14M Belts



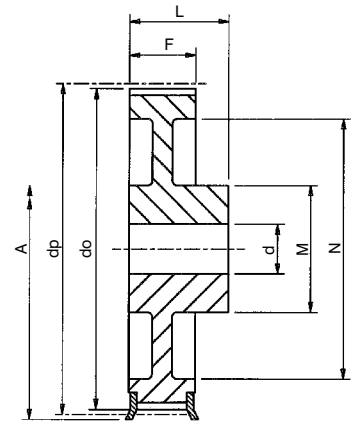
Catalogue No.	No. Teeth Z	Pulley Type	Pitch Circle Dia. dp	Min. Bore d	Max. Bore d	Outside Diameter do	Flange Diameter A	Pulley Width F	Bore Length L	Hub Diameter M	Rim Diameter N	Approx Weight kg
14mm Pitch Pulleys for 40mm Wide Belts. Ref. 14M40												
P28-14M-40	28	1F	124.78	24	67	122.1	128	54	69	100	-	4.73
P30-14M-40	30	1F	133.69	24	67	131.0	138	54	69	100	-	5.45
P32-14M-40	32	1F	142.60	24	67	139.9	154	54	69	100	-	6.17
P34-14M-40	34	1F	151.52	24	67	148.8	160	54	69	100	-	6.88
P36-14M-40	36	1F	160.43	24	67	157.7	168	54	69	100	-	7.60
P38-14M-40	38	1F	169.34	24	80	166.6	184	54	69	120	-	8.28
P40-14M-40	40	1F	178.25	24	80	175.5	188	54	69	120	-	9.26
P44-14M-40	44	1F	196.08	24	80	193.3	212	54	69	120	-	10.32
P48-14M-40	48	2F	213.90	24	82	211.1	226	54	69	135	170	11.50
P56-14M-40	56	2F	249.55	28	82	246.8	256	54	69	135	207	13.05
P64-14M-40	64	2F	285.21	28	82	282.4	296	54	69	135	240	14.40
P72-14M-40	72	2	320.86	28	82	318.1	-	54	69	135	278	16.90
P80-14M-40	80	2	356.51	28	82	353.7	-	54	69	135	314	18.50
P90-14M-40	90	2	401.07	28	82	398.3	-	54	69	135	358	20.00
P112-14M-40	112	2	499.11	28	82	496.3	-	54	69	135	456	26.70
P144-14M-40	144	2	641.71	28	82	638.9	-	54	69	135	600	35.00
P168-14M-40	168	2	748.66	28	82	745.9	-	54	69	135	706	44.20
P192-14M-40	192	2	855.62	28	82	852.8	-	54	69	135	813	52.20
14mm Pitch Pulleys for 55mm Wide Belts. Ref. 14M55												
P28-14M-55	28	1F	124.78	24	67	122.1	128	70	85	100	-	5.60
P30-14M-55	30	1F	133.69	24	67	131.0	138	70	85	100	-	6.60
P32-14M-55	32	1F	142.60	24	67	139.9	154	70	85	100	-	7.60
P34-14M-55	34	1F	151.52	24	67	148.8	160	70	85	100	-	8.60
P36-14M-55	36	1F	160.43	24	67	157.7	168	70	85	100	-	9.60
P38-14M-55	38	1F	169.34	24	80	166.6	184	70	85	120	-	10.80
P40-14M-55	40	1F	178.25	24	80	175.5	188	70	85	120	-	11.20
P44-14M-55	44	1F	196.08	24	80	193.3	212	70	85	120	-	12.50
P48-14M-55	48	3F	213.90	24	82	211.1	226	70	70	135	170	13.70
P56-14M-55	56	3F	249.55	28	82	246.8	256	70	70	135	207	14.50
P64-14M-55	64	3F	285.21	28	82	282.4	296	70	70	135	240	15.60
P72-14M-55	72	3	320.86	28	82	318.1	-	70	70	135	278	16.90
P80-14M-55	80	3	356.51	28	82	353.7	-	70	70	135	314	20.00
P90-14M-55	90	3	401.07	28	82	398.3	-	70	70	135	358	22.60
P112-14M-55	112	3	499.11	28	82	496.3	-	70	70	135	456	29.50
P144-14M-55	144	3	641.71	28	82	638.9	-	70	70	135	600	39.00
P168-14M-55	188	3	748.66	28	82	745.9	-	70	70	135	706	48.50
P192-14M-55	192	3	855.62	28	82	852.8	-	70	70	135	813	57.80
14mm Pitch Pulleys for 85mm Wide Belts. Ref. 14M85												
P28-14M-85	28	1F	124.78	24	67	122.1	128	102	117	100	-	7.70
P30-14M-85	30	1F	133.69	24	67	131.0	138	102	117	100	-	9.10
P32-14M-85	32	1F	142.60	24	67	139.9	154	102	117	100	-	10.50
P34-14M-85	34	1F	151.52	24	67	148.8	160	102	117	100	-	11.90
P36-14M-85	36	1F	160.43	24	67	157.7	168	102	117	100	-	13.20
P38-14M-85	38	1F	169.34	32	80	166.6	184	102	117	120	-	15.15
P40-14M-85	40	1F	178.25	32	90	175.5	188	102	117	135	-	17.10
P44-14M-85	44	1F	196.08	32	90	193.3	212	102	117	135	-	23.30
P48-14M-85	48	1F	213.90	32	100	211.1	226	102	117	150	-	25.00
P56-14M-85	56	3F	249.55	32	90	246.8	256	102	102	150	207	25.00
P64-14M-85	64	3F	285.21	32	90	282.4	296	102	102	150	240	30.50
P72-14M-85	72	3	320.86	32	90	318.1	-	102	102	150	278	28.80
P80-14M-85	80	3	356.51	32	90	353.7	-	102	102	150	314	30.10
P90-14M-85	90	3	401.07	32	90	398.3	-	102	102	150	358	33.00
P112-14M-85	112	3	499.11	32	90	496.3	-	102	102	150	456	41.80
P144-14M-85	144	3	641.71	32	90	638.9	-	102	102	150	600	52.40
P168-14M-85	168	3	748.66	32	90	745.9	-	102	102	150	706	60.30
P192-14M-85	192	3	855.62	32	100	852.8	-	102	102	165	813	70.20
14mm Pitch Pulleys for 115mm Wide Belts. Ref. 14M115												
P28-14M-115	28	1F	124.78	32	67	122.1	128	133	148	100	-	9.20
P30-14M-115	30	1F	133.69	32	67	131.0	138	133	148	100	-	11.20
P32-14M-115	32	1F	142.60	32	67	139.9	154	133	148	100	-	13.20
P34-14M-115	34	1F	151.52	32	67	148.8	160	133	148	100	-	14.80
P36-14M-115	36	1F	160.43	32	67	157.7	168	133	148	100	-	16.60
P38-14M-115	38	1F	169.34	32	80	166.6	184	133	148	120	-	18.20
P40-14M-115	40	1F	178.25	32	90	175.5	188	133	148	135	-	20.56
P44-14M-115	44	1F	196.08	32	94	193.3	212	133	148	140	-	21.93
P48-14M-115	48	1F	213.90	32	100	211.1	226	133	148	150	-	25.00
P56-14M-115	56	1F	249.55	32	100	246.8	256	133	148	150	-	27.50
P64-14M-115	64	3F	285.21	32	90	282.4	296	133	133	150	240	30.10
P72-14M-115	72	3	320.86	32	90	318.1	-	133	133	150	278	32.83
P80-14M-115	80	3	356.51	32	90	353.7	-	133	133	150	314	35.55
P90-14M-115	90	3	401.07	32	90	398.3	-	133	133	150	358	41.00
P112-14M-115	112	3	499.11	32	90	496.3	-	133	133	150	456	54.40
P144-14M-115	144	3	641.71	32	100	638.9	-	133	133	165	600	67.80
P168-14M-115	168	3	748.66	32	100	745.9	-	133	133	165	706	75.80
P192-14M-115	192	3	855.62	32	100	852.8	-	133	133	165	813	88.30
14mm Pitch Pulleys for 170mm Wide Belts. Ref. 14M170												
P28-14M-170	28	1F	124.78	32	67	122.1	128	187	202	100	-	14.80
P30-14M-170	30	1F	133.69	32	67	131.0	138	187	202	100	-	16.70
P32-14M-170	32	1F	142.60	32	67	139.9	154	187	202	100	-	19.40
P34-14M-170	34	1F	151.52	32	67	148.8	160	187	202	100	-	21.85
P36-14M-170	36	1F	160.43	32	80	157.7	168	187	202	120	-	25.20
P38-14M-170	38	1F	169.34	32	90	166.6	183	187	202	135	-	28.40
P40-14M-170	40	1F	178.25	32	90	175.5	188	187	202	140	-	32.26
P48-14M-170	48	1F	213.90	32	90	211.1	226	187	202	150	-	39.50
P64-14M-170	64	3F	285.21	32	90	282.4	296	187	202	150	240	54.00
P80-14M-170	80	3	356.51	32	108	353.7	-	187	187	180	314	69.40
P90-14M-170	90	3	401.07	32	108	398.3	-	187	187	180	358	71.30
P112-14M-170	112	3	499.11	32	108	496.3	-	187	187	200	456	88.00
P144-14M-170	144	3	641.71	32	108	638.9	-	187	187	220	600	113.00
P192-14M-170	192	3	855.62	32	108	852.8	-	187	187	220	813	140.00

Pulley Types

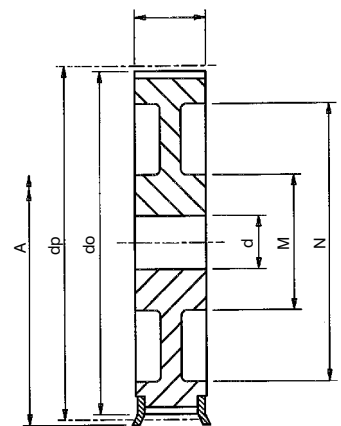
The pulley types referred to in tables are as drawings below. Suffix 'F' indicates pulley has flanges. Pulleys below dividing line in tables are manufactured in cast iron, unflanged pulleys incorporate lightening holes in design, except P80-14M-170. Std. Pulleys can be reworked to customers bore and keyway requirements.



Type 1F
Material: Steel



Type 2/2F
Material: Steel or Cast Iron



Type 3/3F
Material: Cast Iron

All dimensions in mm.

Standard Pulleys can be reworked to customers bore and keyway requirements.

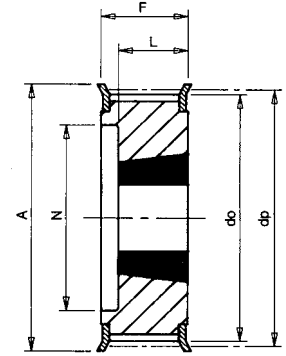
Taper Bore Pulleys for HTD Size 5M & 8M Belts



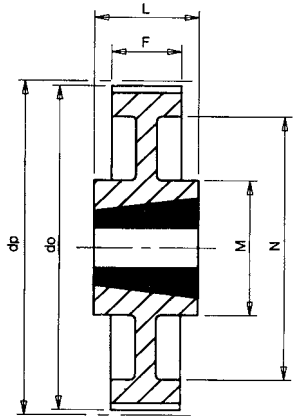
Catalogue No.	No. Teeth Z	Pulley Type	Pitch Circle Dia. dp	Taper Bush Ref.	Max. Bore d	Outside Diameter do	Flange Diameter A	Pulley Width F	Bore Length L	Hub Diameter M	Rim Diameter N	Approx Weight kg
5mm Pitch Pulleys for 15mm Wide Belt Ref. 5M15												
34-5M-15	34	9F	54.11	1008	25	53.0	57	22	22	-	-	0.23
36-5M-15	36	9F	57.30	1108	28	56.2	60	22	22	-	-	0.23
38-5M-15	38	9F	60.48	1108	28	59.4	66	22	22	-	-	0.29
40-5M-15	40	9F	63.66	1108	28	62.5	70	22	22	-	-	0.38
44-5M-15	44	9F	70.03	1108	28	68.9	75	22	22	-	-	0.48
48-5M-15	48	8F	76.39	1210	32	75.3	83	22	25	59	-	0.50
56-5M-15	56	8F	89.13	1210	32	87.9	93	22	25	70	-	0.66
64-5M-15	64	8F	101.86	1210	32	100.7	106	22	25	80	-	0.85
72-5M-15	72	8	114.59	1610	42	113.5	-	22	25	92	-	1.25
80-5M-15	80	8	127.32	1610	42	126.2	-	22	25	92	-	1.70
90-5M-15	90	8	143.24	1610	42	142.1	-	22	25	92	-	2.25
112-5M-15	112	8	178.25	2012	50	177.1	-	20	32	110	-	3.20
136-5M-15	136	7	216.45	2012	50	215.3	-	20	32	110	199	3.60
8mm Pitch Pulleys for 20mm Wide Belt Ref. 8M20												
22-8M-20	22	5F	56.02	1108	28	54.7	60	28	22	-	37	0.26
24-8M-20	24	5F	61.12	1108	28	59.8	66	28	22	-	44	0.30
26-8M-20	26	5F	66.21	1108	28	64.9	70	28	22	-	45	0.36
28-8M-20	28	5F	71.30	1108	28	70.1	75	28	22	-	50	0.44
30-8M-20	30	5F	76.39	1108	28	75.1	83	28	22	-	58	0.53
32-8M-20	32	5F	81.49	1610	42	80.2	87	28	25	-	63	0.42
34-8M-20	34	5F	86.58	1610	42	85.2	91	28	25	-	64	0.55
36-8M-20	36	5F	91.67	1610	42	90.3	97	28	25	-	68	0.68
38-8M-20	38	5F	96.77	1610	42	95.4	102	28	25	-	72	0.80
40-8M-20	40	5F	101.86	1610	42	100.5	106	28	25	-	76	1.00
44-8M-20	44	8F	112.05	2012	50	110.7	120	28	32	93	-	1.20
48-8M-20	48	8F	122.23	2012	50	120.9	128	28	32	96	-	1.60
56-8M-20	56	8F	142.60	2012	50	141.2	150	28	32	110	-	2.40
64-8M-20	64	11F	162.97	2012	50	161.6	168	28	32	110	137	2.70
72-8M-20	72	11F	183.35	2012	50	182.0	192	28	32	110	158	3.30
80-8M-20	80	11	203.72	2012	50	202.4	-	28	32	110	180	3.50
90-8M-20	90	11	229.18	2012	50	227.8	-	28	32	110	204	3.65
8mm Pitch Pulleys for 30mm Wide Belt Ref. 8M30												
22-8M-30	22	5F	56.02	1108	28	54.7	60	38	22	-	37	0.32
24-8M-30	24	5F	61.12	1108	28	59.8	66	38	22	-	44	0.38
26-8M-30	26	5F	66.21	1108	28	64.9	70	38	22	-	44	0.45
28-8M-30	28	5F	71.30	1210	32	70.1	75	38	25	-	50	0.50
30-8M-30	30	9F	76.39	1615	42	75.1	83	38	38	-	-	0.55
32-8M-30	32	9F	81.49	1615	42	80.2	87	38	38	-	-	0.59
34-8M-30	34	9F	86.58	1615	42	85.2	91	38	38	-	-	0.77
36-8M-30	36	9F	91.67	1615	42	90.3	97	38	38	-	-	0.96
38-8M-30	38	9F	96.77	1615	42	95.4	102	38	38	-	-	1.15
40-8M-30	40	9F	101.86	1615	42	100.5	106	38	38	-	-	1.34
44-8M-30	44	13F	112.05	2012	50	110.7	120	38	32	-	86	1.33
48-8M-30	48	13F	122.23	2012	50	120.9	128	38	32	-	90	1.78
56-8M-30	56	13F	142.60	2012	50	141.2	150	38	32	-	110	3.76
64-8M-30	64	8F	162.97	2517	60	161.6	168	38	45	125	-	4.20
72-8M-30	72	11F	183.35	2517	60	182.0	192	38	45	125	158	4.30
80-8M-30	80	11	203.72	2517	60	202.4	-	38	45	125	180	4.60
90-8M-30	90	11	229.18	2517	60	227.8	-	38	45	125	204	5.00
112-8M-30	112	11	285.21	2517	60	283.8	-	38	45	125	254	6.20
144-8M-30	144	11	366.69	2517	60	365.3	-	38	45	125	336	9.00
8mm Pitch Pulleys for 50mm Wide Belt Ref. 8M50												
28-8M-50	28	13F	71.30	1210	32	70.1	75	60	25	-	50	0.60
30-8M-50	30	5F	76.39	1615	42	75.1	83	60	38	-	58	0.65
32-8M-50	32	5F	81.49	1615	42	80.2	87	60	38	-	62	0.82
34-8M-50	34	5F	86.58	1615	42	85.2	91	60	38	-	65	1.06
36-8M-50	36	5F	91.67	1615	42	90.3	97	60	38	-	68	1.30
38-8M-50	38	5F	96.77	1615	42	95.4	102	60	38	-	72	1.60
40-8M-50	40	13F	101.86	2012	50	100.5	106	60	32	-	82	1.71
44-8M-50	44	13F	112.05	2012	50	110.7	120	60	32	-	91	1.78
48-8M-50	48	13F	122.23	2012	50	120.9	128	60	32	-	95	2.30
56-8M-50	56	13F	142.60	2517	60	141.2	150	60	45	-	116	3.40
64-8M-50	64	13F	162.97	2517	60	161.6	168	60	45	-	137	5.00
72-8M-50	72	12F	183.35	2517	60	182.0	192	60	45	125	158	6.70
80-8M-50	80	13	203.72	3020	75	202.4	-	60	51	-	180	8.80
90-8M-50	90	12	229.18	3020	75	227.8	-	60	51	170	204	10.00
112-8M-50	112	12	285.21	3020	75	283.8	-	60	51	170	260	12.00
144-8M-50	144	12	366.69	3020	75	365.3	-	60	51	170	341	15.20
168-8M-50	168	7	427.81	3525	90	426.4	-	60	65	198	402	17.50
192-8M-50	192	7	488.92	3525	90	487.6	-	60	65	198	460	24.00
8mm Pitch Pulleys for 85mm Wide Belt Ref. 8M85												
34-8M-85	34	13F	86.58	1615	42	85.2	91	95	38	-	65	1.43
36-8M-85	36	13F	91.67	1615	42	90.3	97	95	38	-	68	1.87
38-8M-85	38	13F	96.77	1615	42	95.4	102	95	38	-	72	2.20
40-8M-85	40	13F	101.86	2012	50	100.5	106	95	32	-	82	1.80
44-8M-85	44	13F	112.05	2012	50	110.7	120	95	32	-	91	2.30
48-8M-85	48	13F	122.23	2517	60	120.9	128	95	45	-	100	2.66
56-8M-85	56	13F	142.60	2517	60	141.2	150	95	45	-	117	4.45
64-8M-85	64	13F	162.97	2517	60	161.6	168	95	45	-	137	6.20
72-8M-85	72	13F	183.35	3020	75	182.0	192	95	51	-	158	8.00
80-8M-85	80	13	203.72	3020	75	202.4	-	95	51	-	180	10.00
90-8M-85	90	12	229.18	3020	75	227.8	-	95	51	170	204	10.80
112-8M-85	112	12	285.21	3020	75	283.8	-	95	51	170	260	15.00
144-8M-85	144	12	366.69	3525	90	365.3	-	95	65	198	336	20.00
168-8M-85	168	12	427.81	3525	90	426.4	-	95	65	198	395	22.00
192-8M-85	192	12	488.92	3525	90	487.6	-	95	65	198	455	26.00

Pulley Types

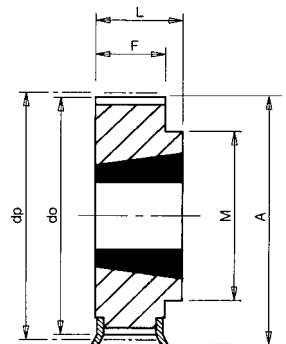
The pulley types referred to in tables are as drawings following. Suffix 'F' indicates pulley has flanges. Pulleys below dividing lines in tables are manufactured in Cast Iron, and pulleys over 300mm diameter generally have lightening holes in web.



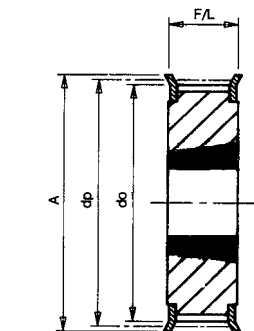
Type 5F



Type 7



Type 8/8F



Type 9F

For bore sizes of Taper Bushes for above pulleys refer to page 25. Pulleys are also available with pilot bore ref. pages 17-20. All dimensions in mm.

Tel +44 121 360 0155

Fax +44 121 325 1079

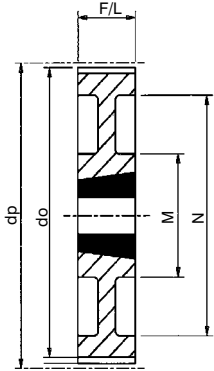
Email sales@crossmorse.com

Taper Bore Pulleys for HTD Size 14M Belts

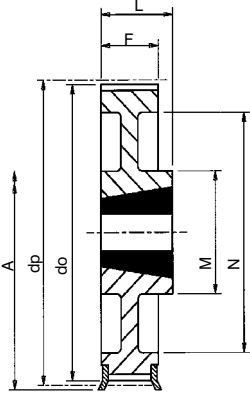


Pulley Types

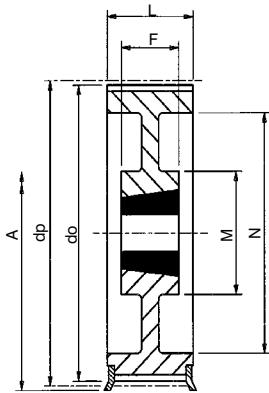
The pulley types referred to in tables are as drawings following. Suffix 'F' indicates pulley has flanges. Pulleys below dividing lines in tables are manufactured in Cast iron, and pulleys over 350mm diameter generally have lightening holes in web.



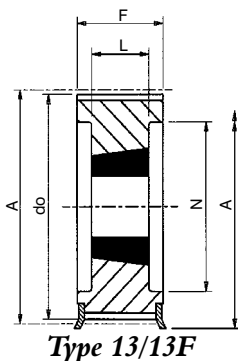
Type 10



Type 11/11F



Type 12/12F



Type 13/13F

Catalogue No.	No. Teeth Z	Pulley Type	Pitch Circle Dia. dp	Taper Bush Ref.	Max. Bore d	Outside Diameter do	Flange Diameter A	Pulley Width F	Bore Length L	Hub Diameter M	Rim Diameter N	Approx Weight kg
14mm Pitch Pulleys for 40mm Wide Belts. Ref. 14M40												
28-14M-40	28	13F	124.78	2012	50	122.1	128	54	32	-	94	2.07
30-14M-40	30	13F	133.69	2012	50	131.0	138	54	32	-	98	2.65
32-14M-40	32	13F	142.60	2012	50	139.9	154	54	32	-	108	3.40
34-14M-40	34	13F	151.52	2517	60	148.8	160	54	45	-	110	3.87
36-14M-40	36	13F	160.43	2517	60	157.7	168	54	45	-	120	4.80
38-14M-40	38	13F	169.34	2517	60	166.6	184	54	45	-	130	5.40
40-14M-40	40	13F	178.25	2517	60	175.5	188	54	45	-	138	6.00
44-14M-40	44	13F	196.08	3020	75	193.3	212	54	51	-	155	7.80
48-14M-40	48	13F	213.90	3020	75	211.1	226	54	51	-	170	9.40
56-14M-40	56	12F	249.55	3020	75	246.8	256	54	51	170	208	10.80
64-14M-40	64	12F	285.21	3020	75	282.4	296	54	51	170	240	13.40
72-14M-40	72	12	320.86	3020	75	318.1	-	54	51	170	280	15.20
80-14M-40	80	12	356.51	3020	75	353.7	-	54	51	170	315	16.00
90-14M-40	90	12	401.07	3020	75	398.3	-	54	51	170	360	17.80
112-14M-40	112	12	499.11	3020	75	496.3	-	54	51	170	457	25.60
144-14M-40	144	12	641.71	3020	75	638.9	-	54	51	170	600	32.00
168-14M-40	168	12	748.66	3020	75	745.9	-	54	51	170	706	44.00
192-14M-40	192	12	855.62	3020	75	852.8	-	54	51	170	813	49.00
14mm Pitch Pulleys for 55mm Wide Belts. Ref. 14M55												
28-14M-55	28	13F	124.78	2012	50	122.1	128	70	32	-	94	2.20
30-14M-55	30	13F	133.69	2517	60	131.0	138	70	45	-	100	2.70
32-14M-55	32	13F	142.60	2517	60	139.9	154	70	45	-	108	3.60
34-14M-55	34	13F	151.52	2517	60	148.8	160	70	45	-	110	4.55
36-14M-55	36	13F	160.43	2517	60	157.7	168	70	45	-	120	5.20
38-14M-55	38	13F	169.34	2517	60	166.6	184	70	45	-	130	6.20
40-14M-55	40	13F	178.25	2517	60	175.5	188	70	45	-	138	7.00
44-14M-55	44	13F	196.08	3020	75	193.3	212	70	51	-	155	8.60
48-14M-55	48	13F	213.90	3020	75	211.1	226	70	51	-	170	10.40
56-14M-55	56	12F	249.55	3020	75	246.8	256	70	51	170	208	12.40
64-14M-55	64	12F	285.21	3020	75	282.4	296	70	51	170	240	14.50
72-14M-55	72	12	320.86	3020	75	318.1	-	70	51	170	280	16.20
80-14M-55	80	12	356.51	3020	75	353.7	-	70	51	170	315	17.50
90-14M-55	90	12	401.07	3020	75	398.3	-	70	51	170	360	20.10
112-14M-55	112	12	499.11	3020	75	496.3	-	70	51	170	457	28.40
144-14M-55	144	12	641.71	3020	75	638.9	-	70	51	170	600	36.20
168-14M-55	168	12	748.66	3020	75	745.9	-	70	51	170	706	49.00
192-14M-55	192	12	855.62	3020	75	852.8	-	70	51	170	813	53.00
14mm Pitch Pulleys for 85mm Wide Belts. Ref. 14M85												
28-14M-85	28	13F	124.78	2517	60	122.1	128	102	45	-	98	2.70
30-14M-85	30	13F	133.69	2517	60	131.0	138	102	45	-	100	3.75
32-14M-85	32	13F	142.60	2517	60	139.9	154	102	45	-	108	4.80
34-14M-85	34	13F	151.52	2517	60	148.8	160	102	45	-	110	6.00
36-14M-85	36	13F	160.43	3020	75	157.7	168	102	51	-	120	6.33
38-14M-85	38	13F	169.34	3020	75	166.6	184	102	51	-	130	6.80
40-14M-85	40	13F	178.25	3020	75	175.5	188	102	51	-	138	8.00
44-14M-85	44	13F	196.08	3020	75	193.3	212	102	51	-	153	11.80
48-14M-85	48	13F	213.90	3020	75	211.1	226	102	51	-	170	15.10
56-14M-85	56	13F	249.55	3525	90	246.8	256	102	65	-	210	19.00
64-14M-85	64	12F	285.21	3525	90	282.4	296	102	65	190	240	23.00
72-14M-85	72	12	320.86	3525	90	318.1	-	102	65	190	280	25.00
80-14M-85	80	12	356.51	3525	90	353.7	-	102	65	190	315	26.00
90-14M-85	90	12	401.07	3525	90	398.3	-	102	65	190	360	27.80
112-14M-85	112	12	499.11	3525	90	496.3	-	102	65	190	457	36.50
144-14M-85	144	12	641.71	3525	90	638.9	-	102	65	190	600	48.00
168-14M-85	168	12	748.66	3525	90	745.9	-	102	65	190	706	60.00
192-14M-85	192	10	855.62	4040	100	852.8	-	102	102	230	813	86.00
14mm Pitch Pulleys for 115mm Wide Belts. Ref. 14M115												
28-14M-115	28	13F	124.78	2517	60	122.1	128	133	45	-	98	3.77
30-14M-115	30	13F	133.69	2517	60	131.0	138	133	45	-	100	5.00
32-14M-115	32	13F	142.60	2517	60	139.9	154	133	45	-	108	6.80
34-14M-115	34	13F	151.52	2517	60	148.8	160	133	45	-	110	8.00
36-14M-115	36	13F	160.43	3020	75	157.7	168	133	51	-	125	8.40
38-14M-115	38	13F	169.34	3020	75	166.6	184	133	51	-	130	8.70
40-14M-115	40	13F	178.25	3020	75	175.5	188	133	51	-	138	9.20
44-14M-115	44	13F	196.08	3030	75	193.3	212	133	76	-	155	14.00
48-14M-115	48	13F	213.90	3030	75	211.1	226	133	76	-	170	17.10
56-14M-115	56	13F	249.55	3535	90	246.8	256	133	89	-	208	24.80
*64-14M-115	64	12F	285.21	3535	90	282.4	296	133	89	190	240	27.00
*72-14M-115	72	12	320.86	3535	90	318.1	-	133	89	190	280	29.00
80-14M-115	80	12	356.51	3535	90	353.7	-	133	89	190	315	32.00
90-14M-115	90	12	401.07	3535	90	398.3	-	133	89	190	360	36.50
112-14M-115	112	12	499.11	3535	90	496.3	-	133	89	190	457	46.00
144-14M-115	144	12	641.71	4040	100	638.9	-	133	102	230	600	68.00
168-14M-115	168	12	748.66	4040	100	745.9	-	133	102	230	706	82.60
192-14M-115	192	12	855.62	4040	100	852.8	-	133	102	230	813	96.00

All dimensions in mm.

For 14M170 belt drives a standard range of pilot bore pulleys is available, ref page 20, alternatively taper bore sprockets can be manufactured to order, for details of recommended dimensions contact Cross & Morse Technical Department. For bore sizes of Taper Bushes refer to page 25.

* Non-stock items manufactured to customer order only.

Tel +44 121 360 0155 Fax +44 121 325 1079 Email sales@crossmorse.com