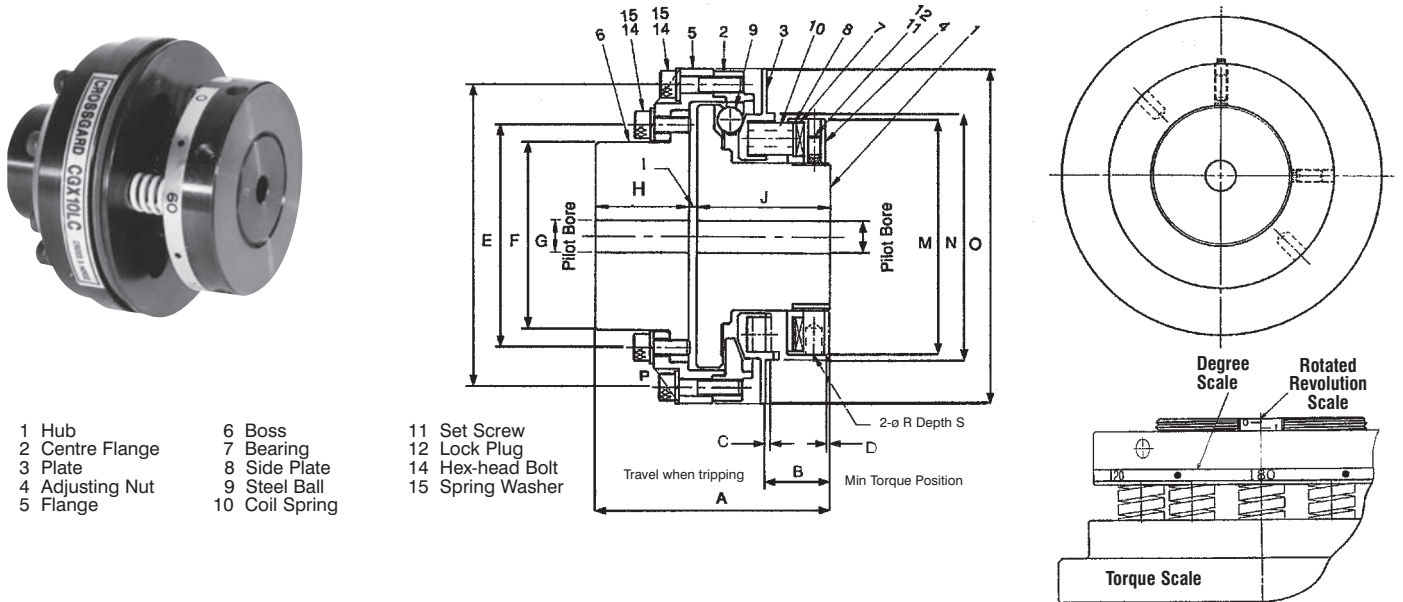


# Type CGX-C Crossgard Couplings



*Provides complete overload protection of drives with accurate positioning and zero backlash.  
For shaft to shaft connection.*

These couplings can be supplied with pilot bore, finish bore and keyseat and setscrews, or fitted with clamping elements to clamp directly to keyless shafts. The use of clamping elements eliminates all backlash in the drive line within the operating torque range, but does require an increase to the overall length of coupling in order to accommodate. Coupling and clamping element assembly are supplied to suit specific metric shaft sizes as indicated in the table. Clutch and Coupling half can have different bush sizes.



- 1 Hub
- 2 Centre Flange
- 3 Plate
- 4 Adjusting Nut
- 5 Flange
- 6 Boss
- 7 Bearing
- 8 Side Plate
- 9 Steel Ball
- 10 Coil Spring

- 11 Set Screw
- 12 Lock Plug
- 14 Hex-head Bolt
- 15 Spring Washer

For Selection of Crossgard CGX-C Clutches refer to page 14, always use with proximity sensor switch, refer to page 29

Model	Setting Torque Range Nm	Max Running Speed RPM	Colour of Spring x Number	Clutch Half		Coupling Half		Shaft Clamping Element † Std. Bore Sizes (mm) ( ) Sizes fit Cplg half only	*Weight kg	Inertia kg m <sup>2</sup> (x10 <sup>-2</sup> )	Maximum Angular Error Deg.	Maximum Parallel Error Deg.	Maximum Axial Movement mm
				Pilot Bore mm	Max Bore mm	Pilot Bore mm	Max Bore mm						
CGX10 LC	1.5 - 5.4	700	Yellow x 3	7	15	7	19	8, 9, 10, 11, 12	1.07	0.222	0.6	0.1	±0.5
CGX10 MC	4.6 - 12.7		Red x 3										
CGX10 HC	9.3 - 25.5		Red x 6										
CGX20 LC	5.2 - 18.6	550	Yellow x 6	8.5	25	8.5	35	11, 12, 14, 15, 16, 18, 19, 20	2.38	0.924	0.6	0.1	±0.5
CGX20 MC	9.8 - 27.5		Red x 3										
CGX20 HC	20.6 - 55		Red x 6										
CGX35 LC	19 - 57	400	Red x 5	12	35	12	50	15, 16, 18, 19, 20, 22, 24, 25, 28, 30	3.92	2.65	0.6	0.1	±0.5
CGX35 MC	36 - 84		Green x 5										
CGX35 HC	74 - 166		Green x 10										
CGX50 LC	40 - 98	350	Red x 5	18	55	18	60	24, 25, 28, 30, 32, 35, 38, 40, 42	10.9	13.34	0.6	0.1	±0.5
CGX50MC	80 - 176		Green x 5										
CGX50HC	160 - 343		Green x 10										
CGX70 LC	120 - 325	240	Red x 8	23	70	23	80	28, 30, 32, 35, 38, 40, 42, 45, 48, 50, 55, 60	16.3	35.7	0.6	0.1	±0.5°
CGX70 MC	235 - 460		Green x 8										
CGX70 HC	353 - 696		Green x 12										

\*Weight and inertia values for couplings with max. bore.

† Clamping elements protrude from end of clutch/coupling 17.5mm to 34.0mm dependant on size.

Models	A	B	C	D Min. Pointed Position	E PCD	F PCD	G	H	I	J	M	N	O	P Screws x Length	Q Screw x Length	R	S
CGX10-C	69	24	1.3	+0.3	62	42	33	25	2	42	56	-	74	M4x18	M4x10	5	10
CGX20-C	84	24	1.6	+0.3	89	66	55	35	3	46	70	-	98	M5x20	M5x12	5	10
CGX35-C	88	24	1.9	- 0.5	113	83	70	35	3	50	88	-	125	M6x25	M6x15	6	10
CGX50-C	114	34	2.4	+0.9	158	112	92	45	4	65	123	128	174	M8x32	M8x20	9	17
CGX70-C	124	36	3.3	+0.6	200	145	116	50	4	70	148	152	218	M10x22	M10x38	10	18

Dimensions in mm.

Tel: +44 121 360 0155    Fax: +44 121 325 1079    Email: sales@crossmorse.com